

## Anti-TRMT112 antibody

<b>Cat. No.</b>	ml164221
<b>Package</b>	25 µl/100 µl/200 µl
<b>Storage</b>	-20°C, pH7.4 PBS, 0.05% NaN <sub>3</sub> , 40% Glycerol

### Product overview

<b>Description</b>	Anti-TRMT112 rabbit polyclonal antibody
<b>Applications</b>	ELISA, WB, IHC
<b>Immunogen</b>	Synthetic peptide of human TRMT112
<b>Reactivity</b>	Human, Mouse
<b>Content</b>	0.9 mg/ml
<b>Host species</b>	Rabbit
<b>Ig class</b>	Immunogen-specific rabbit IgG
<b>Purification</b>	Antigen affinity purification

### Target information

<b>Symbol</b>	TRMT112
<b>Full name</b>	tRNA methyltransferase subunit 11-2
<b>Synonyms</b>	TRM112; HSPC152; HSPC170; hTrm112; TRMT11-2
<b>Swissprot</b>	Q9UI30

### Target Background

Participates both in methylation of protein and tRNA species. The heterodimer with HEMK2/N6AMT1 catalyzes N5-methylation of ETF1 on 'Gln-185', using S-adenosyl L-methionine as methyl donor. The heterodimer with ALKBH8 catalyzes the methylation of 5-carboxymethyl uridine to 5-methylcarboxymethyl uridine at the wobble position of the anticodon loop in target tRNA species.

订购热线: 4008-898-798

### Applications

#### Immunohistochemistry

Predicted cell location: Cytoplasm and Nucleus

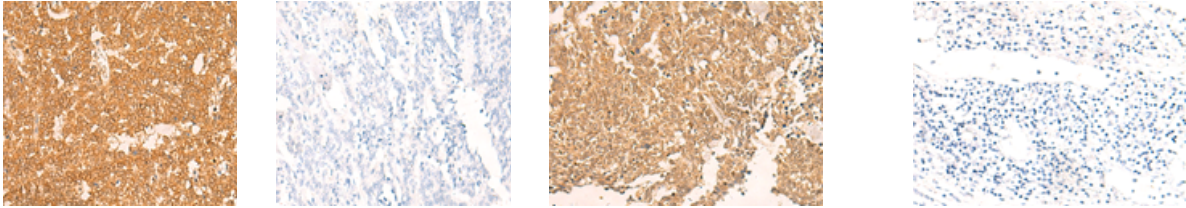
Positive control: Human ovarian cancer

Recommended dilution: 40-200

Predicted cell location: Cytoplasm and Nucleus

Positive control: Human lung cancer

Recommended dilution: 40-200



The image on the left is immunohistochemistry of paraffin-embedded Human ovarian cancer tissue using ml164221(TRMT112 Antibody) at dilution 1/30, on the right is treated with synthetic peptide. (Original magnification: ×200)

The image on the left is immunohistochemistry of paraffin-embedded Human lung cancer tissue using ml164221(TRMT112 Antibody) at dilution 1/30, on the right is treated with synthetic peptide. (Original magnification: ×200)

#### Western blotting

Predicted band size: 14 kDa

Positive control: 231, A172, A549, HepG2, PC3 and Hela cell lysates

Recommended dilution: 200-1000

Gel: 12%SDS-PAGE

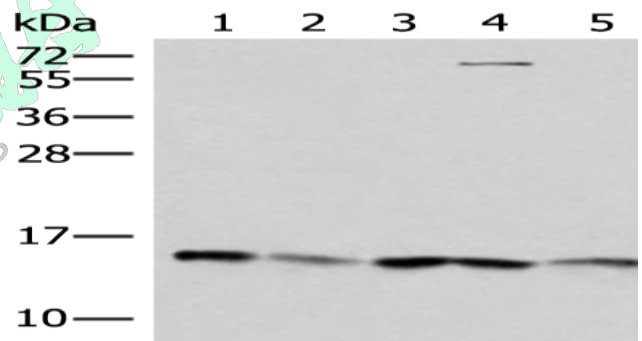
Lysate: 40 µg

Lane 1-6: 231, A172, A549, HepG2, PC3 and Hela cell lysates

Primary antibody: ml164221(TRMT112 Antibody) at dilution 1/300

Secondary antibody: Goat anti rabbit IgG at 1/8000 dilution

Exposure time: 30 seconds



#### ELISA

Recommended dilution: 5000-10000

联系电话: 4008-898-798, 021-61725725

联系QQ: 2881505695, 2881505696

邮箱: mlbio\_cn@yeah.net

网址: www.mlbio.cn