

## Anti-IL36A antibody

<b>Cat. No.</b>	ml164241
<b>Package</b>	25 µl/100 µl/200 µl
<b>Storage</b>	-20°C, pH7.4 PBS, 0.05% NaN <sub>3</sub> , 40% Glycerol

### Product overview

<b>Description</b>	Anti-IL36A rabbit polyclonal antibody
<b>Applications</b>	ELISA, WB, IHC
<b>Immunogen</b>	Synthetic peptide of human IL36A
<b>Reactivity</b>	Human, Mouse
<b>Content</b>	0.78 mg/ml
<b>Host species</b>	Rabbit
<b>Ig class</b>	Immunogen-specific rabbit IgG
<b>Purification</b>	Antigen affinity purification

### Target information

<b>Symbol</b>	IL36A
<b>Full name</b>	interleukin 36 alpha
<b>Synonyms</b>	FIL1; FIL1E; IL1F6; IL-1F6; IL1(EPSILON); FIL1(EPSILON)
<b>Swissprot</b>	Q9UHA7

### Target Background

The protein encoded by this gene is a cytokine that can activate NF-kappa-B and MAPK signaling pathways to generate an inflammatory response. The encoded protein functions primarily in skin and demonstrates increased expression in psoriasis. In addition, decreased expression of this gene has been linked to a poor prognosis in both hepatocellular carcinoma and colorectal cancer patients.

订购热线: 4008-898-798

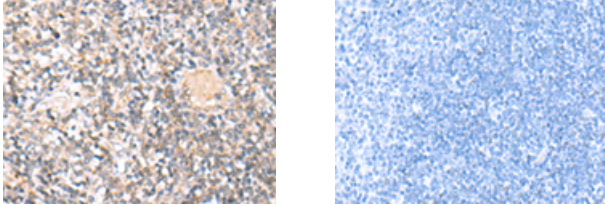
### Applications

#### Immunohistochemistry

Predicted cell location: Secreted

Positive control: Human tonsil

Recommended dilution: 30-150



The image on the left is immunohistochemistry of paraffin-embedded Human tonsil tissue using ml164241(IL36A Antibody) at dilution 1/30, on the right is treated with synthetic peptide. (Original magnification:  $\times 200$ )

#### Western blotting

Predicted band size: 18 kDa

Positive control: Mouse liver tissue and Human tonsil tissue lysates

Recommended dilution: 500-2000

Gel: 12% SDS-PAGE

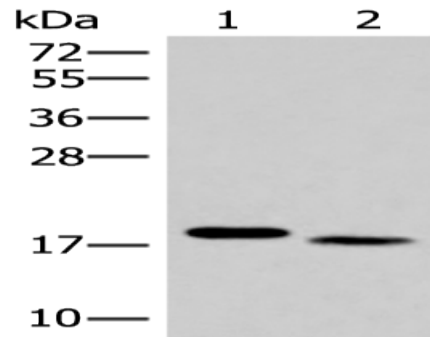
Lysate: 40  $\mu$ g

Lane 1-2: Mouse liver tissue and Human tonsil tissue lysates

Primary antibody: ml164241(IL36A Antibody) at dilution 1/300

Secondary antibody: Goat anti rabbit IgG at 1/8000 dilution

Exposure time: 15 seconds



#### ELISA

Recommended dilution: 5000-10000

联系电话: 4008-898-798, 021-61725725

联系QQ: 2881505695, 2881505696

邮箱: [mlbio\\_cn@yeah.net](mailto:mlbio_cn@yeah.net)

网址: [www.mlbio.cn](http://www.mlbio.cn)