

## Anti-IP6K1 antibody

<b>Cat. No.</b>	ml164268
<b>Package</b>	25 µl/100 µl/200 µl
<b>Storage</b>	-20°C, pH7.4 PBS, 0.05% NaN <sub>3</sub> , 40% Glycerol

### Product overview

<b>Description</b>	Anti-IP6K1 rabbit polyclonal antibody
<b>Applications</b>	ELISA, WB, IHC
<b>Immunogen</b>	Synthetic peptide of human IP6K1
<b>Reactivity</b>	Human, Mouse, Rat
<b>Content</b>	1.2 mg/ml
<b>Host species</b>	Rabbit
<b>Ig class</b>	Immunogen-specific rabbit IgG
<b>Purification</b>	Antigen affinity purification

### Target information

<b>Symbol</b>	IP6K1
<b>Full name</b>	inositol hexakisphosphate kinase 1
<b>Synonyms</b>	PiUS; IHPK1
<b>Swissprot</b>	Q92551

### Target Background

This gene encodes a member of the inositol phosphokinase family. The encoded protein may be responsible for the conversion of inositol hexakisphosphate (InsP<sub>6</sub>) to diphosphoinositol pentakisphosphate (InsP<sub>7</sub>/PP-InsP<sub>5</sub>). It may also convert 1,3,4,5,6-pentakisphosphate (InsP<sub>5</sub>) to PP-InsP<sub>4</sub>. Alternatively spliced transcript variants have been described.

订购热线: 4008-898-798

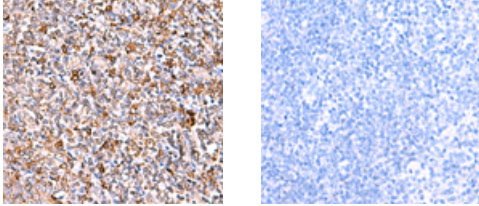
### Applications

#### Immunohistochemistry

Predicted cell location: Cytoplasm

Positive control: Human tonsil

Recommended dilution: 40-200



The image on the left is immunohistochemistry of paraffin-embedded Human tonsil tissue using ml164268(IP6K1 Antibody) at dilution 1/40, on the right is treated with synthetic peptide. (Original magnification:  $\times 200$ )

#### Western blotting

Predicted band size: 50 kDa

Positive control: Jurkat, PC-3, HepG2, Hela, HT-29 and Raji cell lysates

Recommended dilution: 500-2000

Gel: 8%SDS-PAGE

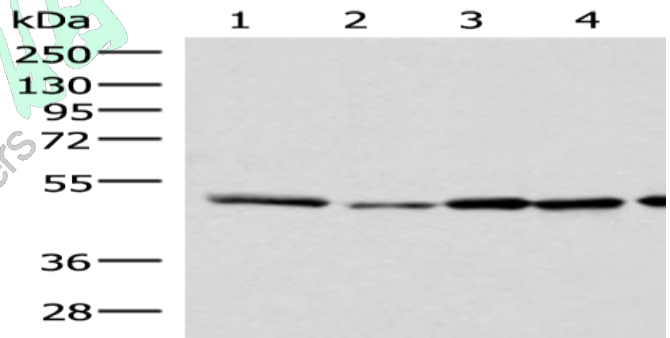
Lysate: 40  $\mu$ g

Lane 1-6: Jurkat, PC-3, HepG2, Hela, HT-29 and Raji cell lysates

Primary antibody: ml164268(IP6K1 Antibody) at dilution 1/400

Secondary antibody: Goat anti rabbit IgG at 1/8000 dilution

Exposure time: 5 seconds



#### ELISA

Recommended dilution: 5000-10000

联系电话: 4008-898-798, 021-61725725

联系QQ: 2881505695, 2881505696

邮箱: [mlbio\\_cn@yeah.net](mailto:mlbio_cn@yeah.net)

网址: [www.mlbio.cn](http://www.mlbio.cn)