

## Anti-ISM1 antibody

<b>Cat. No.</b>	ml164280
<b>Package</b>	25 µl/100 µl/200 µl
<b>Storage</b>	-20°C, pH7.4 PBS, 0.05% NaN <sub>3</sub> , 40% Glycerol

### Product overview

<b>Description</b>	Anti-ISM1 rabbit polyclonal antibody
<b>Applications</b>	ELISA, WB, IHC
<b>Immunogen</b>	Synthetic peptide of human ISM1
<b>Reactivity</b>	Human, Mouse
<b>Content</b>	1.8 mg/ml
<b>Host species</b>	Rabbit
<b>Ig class</b>	Immunogen-specific rabbit IgG
<b>Purification</b>	Antigen affinity purification

### Target information

<b>Symbol</b>	ISM1
<b>Full name</b>	isthmin 1
<b>Synonyms</b>	ISM; Isthmin; C20orf82; bA149I18.1; dJ1077I2.1
<b>Swissprot</b>	B1AKI9

### Target Background

Acts as an angiogenesis inhibitor.

订购热线: 4008-898-798

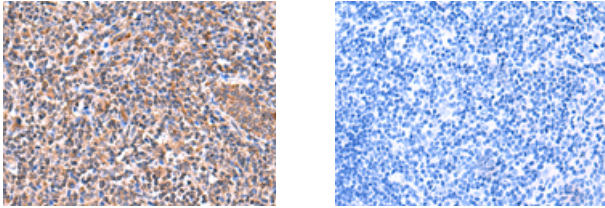
### Applications

#### Immunohistochemistry

Predicted cell location: Secreted

Positive control: Human tonsil

Recommended dilution: 50-300



The image on the left is immunohistochemistry of paraffin-embedded Human tonsil tissue using ml164280(ISM1 Antibody) at dilution 1/60, on the right is treated with synthetic peptide. (Original magnification:  $\times 200$ )

#### Western blotting

Predicted band size: 52 kDa

Positive control: HepG2 cell lysate

Recommended dilution: 1000-5000

Gel: 8%SDS-PAGE

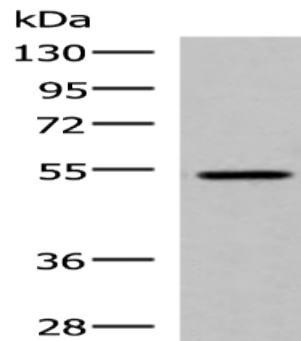
Lysate: 40  $\mu$ g

Lane: HepG2 cell lysate

Primary antibody: ml164280(ISM1 Antibody) at dilution 1/1000

Secondary antibody: Goat anti rabbit IgG at 1/5000 dilution

Exposure time: 7 seconds



#### ELISA

Recommended dilution: 5000-10000

联系电话: 4008-898-798, 021-61725725

联系QQ: 2881505695, 2881505696

邮箱: [mlbio\\_cn@yeah.net](mailto:mlbio_cn@yeah.net)

网址: [www.mlbio.cn](http://www.mlbio.cn)