

Anti-ISY1-RAB43 antibody

Cat. No.	ml164282
Package	25 µl/100 µl/200 µl
Storage	-20°C, pH7.4 PBS, 0.05% NaN ₃ , 40% Glycerol

Product overview

Description	Anti-ISY1-RAB43 rabbit polyclonal antibody
Applications	ELISA, WB, IHC
Immunogen	Synthetic peptide of human ISY1-RAB43
Reactivity	Human, Mouse, Rat
Content	1.62 mg/ml
Host species	Rabbit
Ig class	Immunogen-specific rabbit IgG
Purification	Antigen affinity purification

Target information

Symbol	ISY1-RAB43
Full name	ISY1-RAB43 readthrough
Synonyms	
Swissprot	Q9ULR0

Target Background

This locus represents naturally occurring read-through transcription between the neighboring ISY1 (ISY1 splicing factor homolog) and RAB43 (RAB43, member RAS oncogene family) gene on chromosome 3. The read-through transcript encodes a protein that shares sequence identity with the upstream gene product, but its C-terminus is distinct due to a frameshift relative to the downstream gene.

订购热线: 4008-898-798

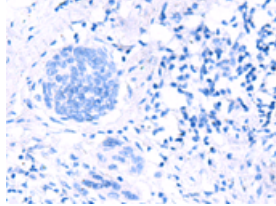
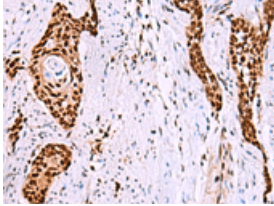
Applications

Immunohistochemistry

Predicted cell location: Nucleus

Positive control: Human esophagus cancer

Recommended dilution: 50-300

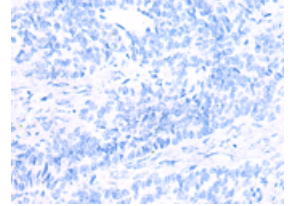
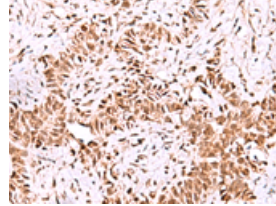


The image on the left is immunohistochemistry of paraffin-embedded Human esophagus cancer tissue using ml164282(ISY1-RAB43 Antibody) at dilution 1/55, on the right is treated with synthetic peptide. (Original magnification: $\times 200$)

Predicted cell location: Nucleus

Positive control: Human ovarian cancer

Recommended dilution: 50-300



The image on the left is immunohistochemistry of paraffin-embedded Human ovarian cancer tissue using ml164282(ISY1-RAB43 Antibody) at dilution 1/55, on the right is treated with synthetic peptide. (Original magnification: $\times 200$)

Western blotting

Predicted band size: 33 kDa

Positive control: HepG2, HL60 cell, Human fetal liver tissue lysates

Recommended dilution: 1000-5000

Gel: 8%SDS-PAGE

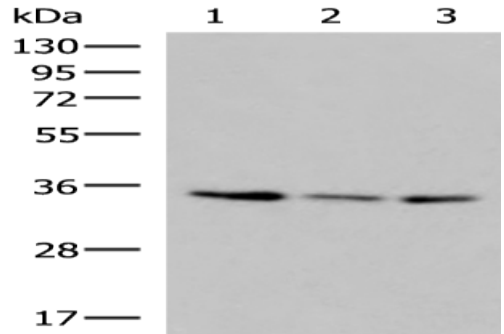
Lysate: 40 μ g

Lane 1-3: HepG2, HL60 cell, Human fetal liver tissue lysates

Primary antibody: ml164282(ISY1-RAB43 Antibody) at dilution 1/1000

Secondary antibody: Goat anti rabbit IgG at 1/5000 dilution

Exposure time: 10 seconds



ELISA

Recommended dilution: 5000-10000

联系电话: 4008-898-798, 021-61725725

联系QQ: 2881505695, 2881505696

邮箱: mlbio_cn@yeah.net

网址: www.mlbio.cn