

## Anti-JPH1 antibody

|                 |   |
|-----------------|---|
| <b>Cat. No.</b> | ml164295  |
| <b>Package</b>  | 25 µl/100 µl/200 µl                                     |
| <b>Storage</b>  | -20°C, pH7.4 PBS, 0.05% NaN <sub>3</sub> , 40% Glycerol |

### Product overview

|                     |                                      |
|---------------------|--------------------------------------|
| <b>Description</b>  | Anti-JPH1 rabbit polyclonal antibody |
| <b>Applications</b> | ELISA, WB, IHC                       |
| <b>Immunogen</b>    | Synthetic peptide of human JPH1      |
| <b>Reactivity</b>   | Human, Mouse                         |
| <b>Content</b>      | 0.96 mg/ml                           |
| <b>Host species</b> | Rabbit                               |
| <b>Ig class</b>     | Immunogen-specific rabbit IgG        |
| <b>Purification</b> | Antigen affinity purification        |

### Target information

|                  |                   |
|------------------|-------------------|
| <b>Symbol</b>    | JPH1              |
| <b>Full name</b> | junctionophilin 1 |
| <b>Synonyms</b>  | JP1; JP-1; CMT2K  |
| <b>Swissprot</b> | Q9HDC5            |

### Target Background

Junctional complexes between the plasma membrane and endoplasmic/sarcoplasmic reticulum are a common feature of all excitable cell types and mediate cross talk between cell surface and intracellular ion channels. The protein encoded by this gene is a component of junctional complexes and is composed of a C-terminal hydrophobic segment spanning the endoplasmic/sarcoplasmic reticulum membrane and a remaining cytoplasmic domain that shows specific affinity for the plasma membrane. This gene is a member of the junctionophilin gene family.

订购热线: 4008-898-798

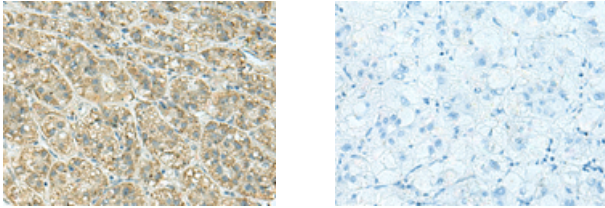
### Applications

#### Immunohistochemistry

Predicted cell location: Cytoplasm

Positive control: Human liver cancer

Recommended dilution: 30-150



The image on the left is immunohistochemistry of paraffin-embedded Human liver cancer tissue using ml164295(JPH1 Antibody) at dilution 1/30, on the right is treated with synthetic peptide. (Original magnification: ×200)

#### Western blotting

Predicted band size: 72 kDa

Positive control: Mouse heart tissue and Mouse skeletal muscle tissue lysates

Recommended dilution: 1000-5000

Gel: 8%SDS-PAGE

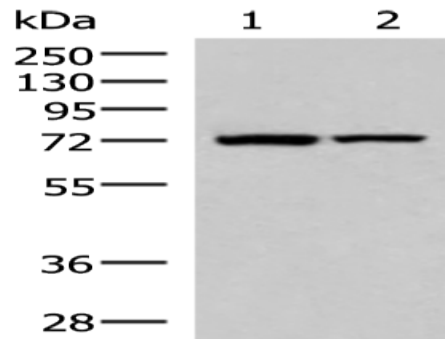
Lysate: 40 µg

Lane: Mouse heart tissue and Mouse skeletal muscle tissue lysates

Primary antibody: ml164295(JPH1 Antibody) at dilution 1/800

Secondary antibody: Goat anti rabbit IgG at 1/5000 dilution

Exposure time: 10 seconds



#### ELISA

Recommended dilution: 5000-10000

联系电话: 4008-898-798, 021-61725725

联系QQ: 2881505695, 2881505696

邮箱: [mlbio\\_cn@yeah.net](mailto:mlbio_cn@yeah.net)

网址: [www.mlbio.cn](http://www.mlbio.cn)