

Anti-PEMT antibody

Cat. No.	ml164296
Package	25 µl/100 µl/200 µl
Storage	-20°C, pH7.4 PBS, 0.05% NaN ₃ , 40% Glycerol

Product overview

Description	Anti-PEMT rabbit polyclonal antibody
Applications	ELISA, WB, IHC
Immunogen	Synthetic peptide of human PEMT
Reactivity	Human, Mouse
Content	1.56 mg/ml
Host species	Rabbit
Ig class	Immunogen-specific rabbit IgG
Purification	Antigen affinity purification

Target information

Symbol	PEMT
Full name	phosphatidylethanolamine N-methyltransferase
Synonyms	PLMT; PNMT; PEAMT; PEMPT; PEMT2
Swissprot	Q9UBM1

Target Background

Phosphatidylcholine (PC) is the most abundant mammalian phospholipid. This gene encodes an enzyme which converts phosphatidylethanolamine to phosphatidylcholine by sequential methylation in the liver. Another distinct synthetic pathway in nucleated cells converts intracellular choline to phosphatidylcholine by a three-step process. The protein isoforms encoded by this gene localize to the endoplasmic reticulum and mitochondria-associated membranes. Alternate splicing of this gene results in multiple transcript variants encoding different isoforms.

订购热线: 4008-898-798

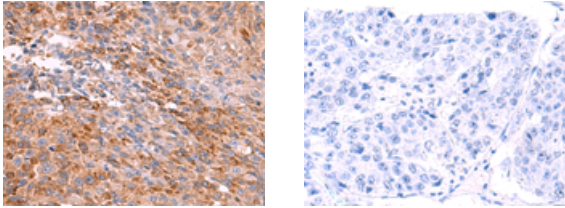
Applications

Immunohistochemistry

Predicted cell location: Cytoplasm

Positive control: Human colorectal cancer

Recommended dilution: 50-300



The image on the left is immunohistochemistry of paraffin-embedded Human colorectal cancer tissue using ml164296(PEMT Antibody) at dilution 1/55, on the right is treated with synthetic peptide. (Original magnification: ×200)

Western blotting

Predicted band size: 22 kDa

Positive control: Mouse liver tissue, HepG2, 293T and 231 cell lysates

Recommended dilution: 1000-5000

Gel: 12%SDS-PAGE

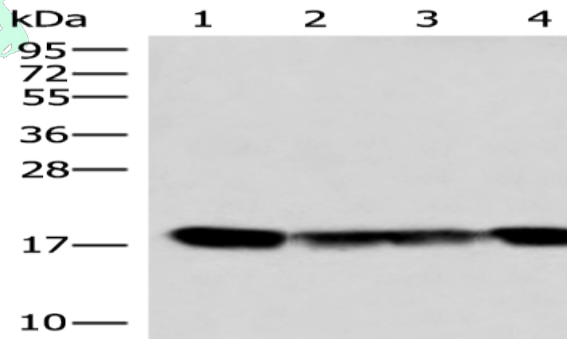
Lysate: 40 µg

Lane 1-4: Mouse liver tissue, HepG2, 293T and 231 cell lysates

Primary antibody: ml164296(PEMT Antibody) at dilution 1/800

Secondary antibody: Goat anti rabbit IgG at 1/5000 dilution

Exposure time: 1 second



ELISA

Recommended dilution: 5000-10000

联系电话: 4008-898-798, 021-61725725

联系QQ: 2881505695, 2881505696

邮箱: mlbio_cn@yeah.net

网址: www.mlbio.cn