

Anti-COLEC12 antibody

| | |
|-----------------|---|
| Cat. No. | ml162697 |
| Package | 25 µl/100 µl/200 µl |
| Storage | -20°C, pH7.4 PBS, 0.05% NaN ₃ , 40% Glycerol |

Product overview

| | |
|---------------------|---|
| Description | Anti-COLEC12 rabbit polyclonal antibody |
| Applications | ELISA, IHC |
| Immunogen | Synthetic peptide of human COLEC12 |
| Reactivity | Human, Mouse, Rat |
| Content | 1.1 mg/ml |
| Host species | Rabbit |
| Ig class | Immunogen-specific rabbit IgG |
| Purification | Antigen affinity purification |

Target information

| | |
|------------------|--------------------------------|
| Symbol | COLEC12 |
| Full name | collectin sub-family member 12 |
| Synonyms | CLP1; NSR2; SRCL; SCARA4 |
| Swissprot | Q5KU26 |

Target Background

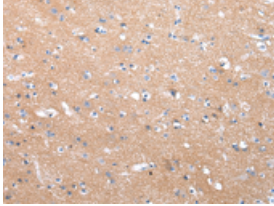
This gene encodes a member of the C-lectin family, proteins that possess collagen-like sequences and carbohydrate recognition domains. This protein is a scavenger receptor, a cell surface glycoprotein that displays several functions associated with host defense. It can bind to carbohydrate antigens on microorganisms, facilitating their recognition and removal. It also mediates the recognition, internalization, and degradation of oxidatively modified low density lipoprotein by vascular endothelial cells.

订购热线: 4008-898-798

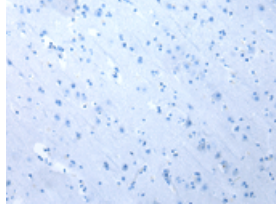
Applications

Immunohistochemistry

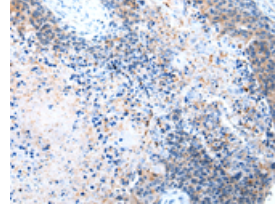
Predicted cell location: Cytoplasm
Positive control: Human brain
Recommended dilution: 30-150



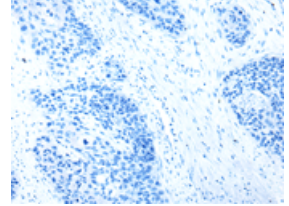
The image on the left is immunohistochemistry of paraffin-embedded Human brain tissue using ml162697(COLEC12 Antibody) at dilution 1/40, on the right is treated with synthetic peptide. (Original magnification: ×200)



Predicted cell location: Cytoplasm
Positive control: Human esophagus cancer
Recommended dilution: 30-150



The image on the left is immunohistochemistry of paraffin-embedded Human esophagus cancer tissue using ml162697(COLEC12 Antibody) at dilution 1/40, on the right is treated with synthetic peptide. (Original magnification: ×200)



ELISA

Recommended dilution: 2000-10000

联系电话: 4008-898-798, 021-61725725

联系QQ: 2881505695, 2881505696

邮箱: mlbio_cn@yeah.net

网址: www.mlbio.cn