

Anti-EML4 antibody

Cat. No.	ml162773
Package	25 µl/100 µl/200 µl
Storage	-20°C, pH7.4 PBS, 0.05% NaN ₃ , 40% Glycerol

Product overview

Description	Anti-EML4 rabbit polyclonal antibody
Applications	ELISA, IHC
Immunogen	Synthetic peptide of human EML4
Reactivity	Human
Content	0.6 mg/ml
Host species	Rabbit
Ig class	Immunogen-specific rabbit IgG
Purification	Antigen affinity purification

Target information

Symbol	EML4
Full name	echinoderm microtubule associated protein like 4
Synonyms	C2orf2; ELP120; EMAP-4; EMAPL4; ROPP120
Swissprot	Q9HC35

Target Background

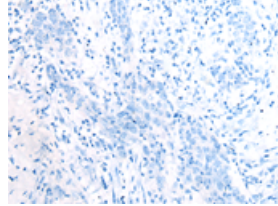
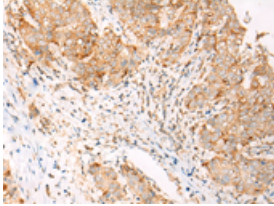
This gene is a member of the echinoderm microtubule associated protein-like family. The encoded WD-repeat protein may be involved in microtubule formation. Abnormal fusion of parts of this gene with portions of the anaplastic lymphoma receptor tyrosine kinase gene, which generates EML4-ALK fusion transcripts, is one of the primary mutations associated with non-small cell lung cancer. Alternative splicing of this gene results in two transcript variants.

订购热线: 4008-898-798

Applications

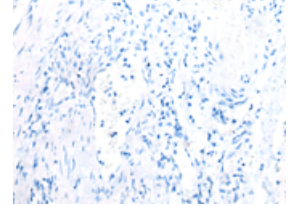
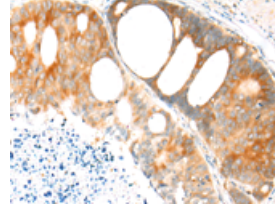
Immunohistochemistry

Predicted cell location: Cytoplasm and Cell membrane
Positive control: Human esophagus cancer
Recommended dilution: 10-50



The image on the left is immunohistochemistry of paraffin-embedded Human esophagus cancer tissue using ml162773(EML4 Antibody) at dilution 1/20, on the right is treated with synthetic peptide. (Original magnification: ×200)

Predicted cell location: Cytoplasm and Cell membrane
Positive control: Human gastric cancer
Recommended dilution: 10-50



The image on the left is immunohistochemistry of paraffin-embedded Human gastric cancer tissue using ml162773(EML4 Antibody) at dilution 1/20, on the right is treated with synthetic peptide. (Original magnification: ×200)

ELISA

Recommended dilution: 1000-2000

联系电话: 4008-898-798, 021-61725725

联系QQ: 2881505695, 2881505696

邮箱: mlbio_cn@yeah.net

网址: www.mlbio.cn