

Anti-MTNR1B antibody

Cat. No.	ml162810
Package	25 µl/100 µl/200 µl
Storage	-20°C, pH7.4 PBS, 0.05% NaN ₃ , 40% Glycerol

Product overview

Description	Anti-MTNR1B rabbit polyclonal antibody
Applications	ELISA, IHC
Immunogen	Synthetic peptide of human MTNR1B
Reactivity	Human
Content	1 mg/ml
Host species	Rabbit
Ig class	Immunogen-specific rabbit IgG
Purification	Antigen affinity purification

Target information

Symbol	MTNR1B
Full name	melatonin receptor 1B
Synonyms	MT2; FGQTL2; MEL-1B-R
Swissprot	P49286

Target Background

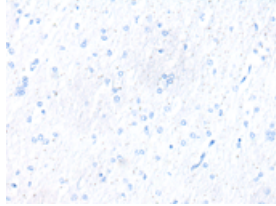
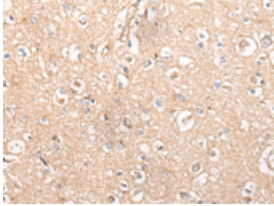
This gene encodes one of two high affinity forms of a receptor for melatonin, the primary hormone secreted by the pineal gland. This gene product is an integral membrane protein that is a G-protein coupled, 7-transmembrane receptor. It is found primarily in the retina and brain although this detection requires RT-PCR. It is thought to participate in light-dependent functions in the retina and may be involved in the neurobiological effects of melatonin.

订购热线: 4008-898-798

Applications

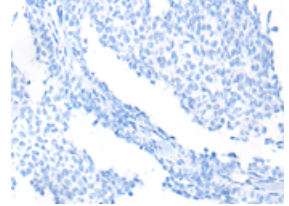
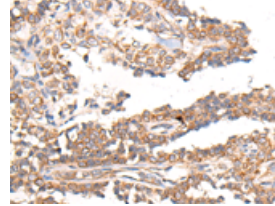
Immunohistochemistry

Predicted cell location: Cell membrane
Positive control: Human brain
Recommended dilution: 30-150



The image on the left is immunohistochemistry of paraffin-embedded Human brain tissue using ml162810(MTNR1B Antibody) at dilution 1/55, on the right is treated with synthetic peptide. (Original magnification: ×200)

Predicted cell location: Cell membrane
Positive control: Human ovarian cancer
Recommended dilution: 30-150



The image on the left is immunohistochemistry of paraffin-embedded Human ovarian cancer tissue using ml162810(MTNR1B Antibody) at dilution 1/55, on the right is treated with synthetic peptide. (Original magnification: ×200)

ELISA

Recommended dilution: 5000-10000

联系电话: 4008-898-798, 021-61725725

联系QQ: 2881505695, 2881505696

邮箱: mlbio_cn@yeah.net

网址: www.mlbio.cn