

Anti-SYT16 antibody

Cat. No.	ml162865
Package	25 µl/100 µl/200 µl
Storage	-20°C, pH7.4 PBS, 0.05% NaN ₃ , 40% Glycerol

Product overview

Description	Anti-SYT16 rabbit polyclonal antibody
Applications	ELISA, IHC
Immunogen	Synthetic peptide of human SYT16
Reactivity	Human, Mouse
Content	0.78 mg/ml
Host species	Rabbit
Ig class	Immunogen-specific rabbit IgG
Purification	Antigen affinity purification

Target information

Symbol	SYT16
Full name	synaptotagmin 16
Synonyms	yt14r; SYT14L; syt14r; Strep14; CHR14SYT
Swissprot	Q17RD7

Target Background

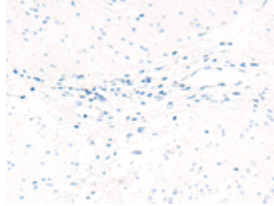
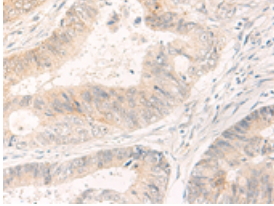
May be involved in the trafficking and exocytosis of secretory vesicles in non-neuronal tissues. Is Ca²⁺-independent.

订购热线: 4008-898-798

Applications

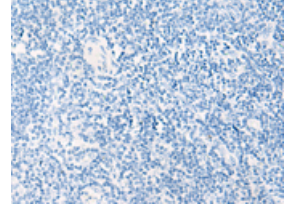
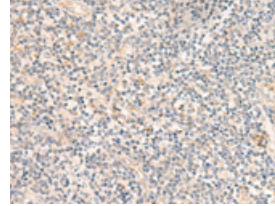
Immunohistochemistry

Predicted cell location: Cytoplasm
Positive control: Human colorectal cancer
Recommended dilution: 25-100



The image on the left is immunohistochemistry of paraffin-embedded Human colorectal cancer tissue using ml162865(SYT16 Antibody) at dilution 1/30, on the right is treated with synthetic peptide. (Original magnification: $\times 200$)

Predicted cell location: Cytoplasm
Positive control: Human tonsil
Recommended dilution: 25-100



The image on the left is immunohistochemistry of paraffin-embedded Human tonsil tissue using ml162865(SYT16 Antibody) at dilution 1/30, on the right is treated with synthetic peptide. (Original magnification: $\times 200$)

ELISA

Recommended dilution: 5000-10000

联系电话: 4008-898-798, 021-61725725

联系QQ: 2881505695, 2881505696

邮箱: mlbio_cn@yeah.net

网址: www.mlbio.cn