

Anti-NUDT8 antibody

Cat. No. ml162882
Package 25 µl/100 µl/200 µl
Storage -20°C, pH7.4 PBS, 0.05% NaN₃, 40% Glycerol

Product overview

Description Anti-NUDT8 rabbit polyclonal antibody
Applications ELISA, IHC
Immunogen Synthetic peptide of human NUDT8
Reactivity Human, Mouse
Content 0.66 mg/ml
Host species Rabbit
Ig class Immunogen-specific rabbit IgG
Purification Antigen affinity purification

Target information

Symbol NUDT8
Full name nudix hydrolase 8
Synonyms
Swissprot Q8WV74

Target Background

Probably mediates the hydrolysis of some nucleoside diphosphate derivatives.

订购热线: 4008-898-798

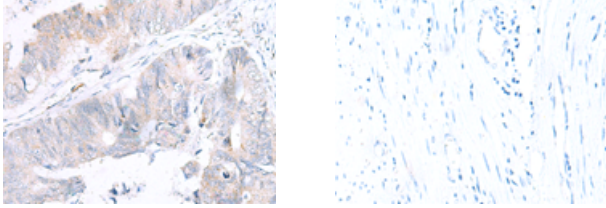
Applications

Immunohistochemistry

Predicted cell location: Cytoplasm

Positive control: Human colorectal cancer

Recommended dilution: 20-100



The image on the left is immunohistochemistry of paraffin-embedded Human colorectal cancer tissue using ml162882(NUDT8 Antibody) at dilution 1/25, on the right is treated with synthetic peptide. (Original magnification: $\times 200$)

ELISA

Recommended dilution: 5000-10000

联系电话: 4008-898-798, 021-61725725

联系QQ: 2881505695, 2881505696

邮箱: mlbio_cn@yeah.net

网址: www.mlbio.cn