

Anti-PRH2 antibody

Cat. No.	ml162921
Package	25 µl/100 µl/200 µl
Storage	-20°C, pH7.4 PBS, 0.05% NaN ₃ , 40% Glycerol

Product overview

Description	Anti-PRH2 rabbit polyclonal antibody
Applications	ELISA, IHC
Immunogen	Synthetic peptide of human PRH2
Reactivity	Human
Content	0.6 mg/ml
Host species	Rabbit
Ig class	Immunogen-specific rabbit IgG
Purification	Antigen affinity purification

Target information

Symbol	PRH2
Full name	proline-rich protein HaeIII subfamily 2
Synonyms	Pr; pa; PRH1; db-s; PIF-S; pr1/Pr2; PRP-1/PRP-2
Swissprot	P02810

Target Background

PRH1 (acidic salivary proline-rich protein, HaeIII type, 1) and PRH2 (acidic salivary proline-rich protein, HaeIII type, 2), contain repeated cleavage sites for the restriction enzyme HaeIII and code for PRPs. PRH1/2, also known as salivary acidic proline-rich phosphoprotein 1/2, PRP-1/PRP-2 or parotid proline-rich protein 1/2, is a 166 amino acid secreted protein that functions as a highly potent inhibitor of calcium phosphate crystal growth. Similar to other PRPs, PRH1/2 provides a protective and reparative environment for dental enamel, which is important for teeth integrity.

订购热线: 4008-898-798

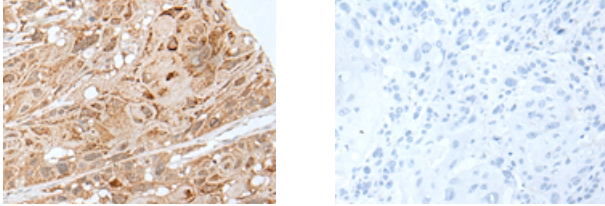
Applications

Immunohistochemistry

Predicted cell location: Secreted

Positive control: Human esophagus cancer

Recommended dilution: 25-100



The image on the left is immunohistochemistry of paraffin-embedded Human esophagus cancer tissue using ml162921 (PRH2 Antibody) at dilution 1/30, on the right is treated with synthetic peptide. (Original magnification: $\times 200$)

ELISA

Recommended dilution: 5000-10000

联系电话: 4008-898-798, 021-61725725

联系QQ: 2881505695, 2881505696

邮箱: mlbio_cn@yeah.net

网址: www.mlbio.cn