

Anti-PLA2G16 antibody

Cat. No.	ml162932
Package	25 µl/100 µl/200 µl
Storage	-20°C, pH7.4 PBS, 0.05% NaN ₃ , 40% Glycerol

Product overview

Description	Anti-PLA2G16 rabbit polyclonal antibody
Applications	ELISA, IHC
Immunogen	Synthetic peptide of human PLA2G16
Reactivity	Human, Mouse, Rat
Content	1.1 mg/ml
Host species	Rabbit
Ig class	Immunogen-specific rabbit IgG
Purification	Antigen affinity purification

Target information

Symbol	PLA2G16
Full name	phospholipase A2 group XVI
Synonyms	AdPLA; HRSL3; HRASLS3; HREV107; HREV107-1; HREV107-3; H-REV107-1
Swissprot	P53816

Target Background

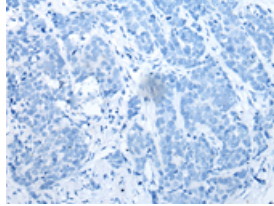
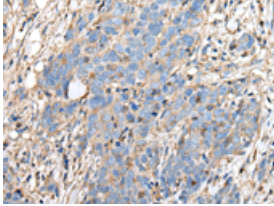
Secretory phospholipase A2 (PLA2) enzymes cleave an acyl ester bond in the sn-2 position of glycerophospholipids. These extracellular proteins have a high disulfide bond content, low molecular mass (14 kDa), and require mM levels of Ca²⁺ for catalysis. They play a crucial role in the generation of arachidonates and eicosanoids, and have a number of biological actions including immunological responses, inflammation, cellular proliferation, vasoconstriction, and bronchioconstriction. Exhibits PLA1/2 activity, catalyzing the calcium-independent hydrolysis of acyl groups in various phosphatidylcholines (PC) and phosphatidylethanolamine (PE). For most substrates, PLA1 activity is much higher than PLA2 activity. Specifically catalyzes the release of fatty acids from phospholipids in adipose tissue (By similarity). N- and O-acylation activity is hardly detectable. Might decrease protein phosphatase 2A (PP2A) activity.

订购热线: 4008-898-798

Applications

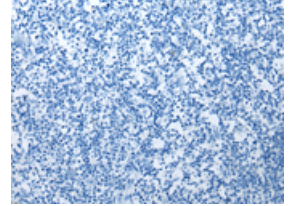
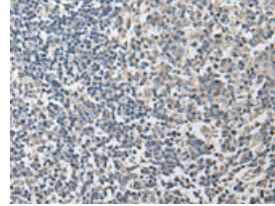
Immunohistochemistry

Predicted cell location: Cytoplasm and Cell membrane
Positive control: Human thyroid cancer
Recommended dilution: 30-150



The image on the left is immunohistochemistry of paraffin-embedded Human thyroid cancer tissue using ml162932(PLA2G16 Antibody) at dilution 1/40, on the right is treated with synthetic peptide. (Original magnification: $\times 200$)

Predicted cell location: Cytoplasm and Cell membrane
Positive control: Human tonsil
Recommended dilution: 30-150



The image on the left is immunohistochemistry of paraffin-embedded Human tonsil tissue using ml162932(PLA2G16 Antibody) at dilution 1/40, on the right is treated with synthetic peptide. (Original magnification: $\times 200$)

ELISA

Recommended dilution: 5000-10000

联系电话: 4008-898-798, 021-61725725

联系QQ: 2881505695, 2881505696

邮箱: mlbio_cn@yeah.net

网址: www.mlbio.cn