

Anti-ALS2CL antibody

Cat. No.	ml162947
Package	25 µl/100 µl/200 µl
Storage	-20°C, pH7.4 PBS, 0.05% NaN ₃ , 40% Glycerol

Product overview

Description	Anti-ALS2CL rabbit polyclonal antibody
Applications	ELISA, IHC
Immunogen	Synthetic peptide of human ALS2CL
Reactivity	Human, Mouse
Content	0.4 mg/ml
Host species	Rabbit
Ig class	Immunogen-specific rabbit IgG
Purification	Antigen affinity purification

Target information

Symbol	ALS2CL
Full name	ALS2 C-terminal like
Synonyms	RN49018
Swissprot	Q60I27

Target Background

Mutations in the ALS2 gene result in a number of juvenile recessive motor neuron diseases (MNDs), including juvenile primary lateral sclerosis (JPLS), a recessive form of amyotrophic lateral sclerosis (ALS2), infantile onset ascending hereditary spastic paralysis (IAHSP) and a form of complicated hereditary spastic paraplegia (cHSP). The ALS2 gene encodes the Alsin protein. Alsin acts as a guanine nucleotide exchange factor for Rab5, a modulator of the endocytic pathway. Alsin is a cytosolic protein, which is associated with small, punctate membrane structures. Therefore Alsin may mediate membrane transport events, potentially linking endocytic processes and actin cytoskeleton remodeling. The ALS2 C-terminal like protein (ALS2CL) also modulates Rab5 activity.

订购热线: 4008-898-798

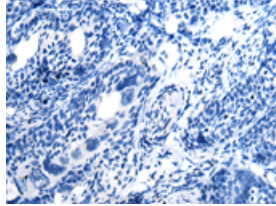
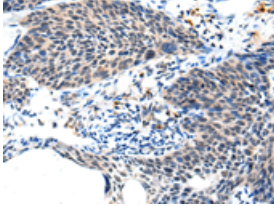
Applications

Immunohistochemistry

Predicted cell location: Cytoplasm

Positive control: Human cervical cancer

Recommended dilution: 25-100

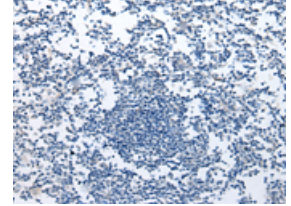
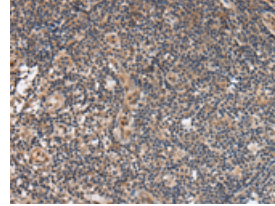


The image on the left is immunohistochemistry of paraffin-embedded Human cervical cancer tissue using ml162947(ALS2CL Antibody) at dilution 1/20, on the right is treated with synthetic peptide. (Original magnification: $\times 200$)

Predicted cell location: Cytoplasm

Positive control: Human tonsil

Recommended dilution: 25-100



The image on the left is immunohistochemistry of paraffin-embedded Human tonsil tissue using ml162947(ALS2CL Antibody) at dilution 1/20, on the right is treated with synthetic peptide. (Original magnification: $\times 200$)

ELISA

Recommended dilution: 2000-5000

联系电话: 4008-898-798, 021-61725725

联系QQ: 2881505695, 2881505696

邮箱: mlbio_cn@yeah.net

网址: www.mlbio.cn