

Anti-TNIK antibody

Cat. No.	ml162948
Package	25 µl/100 µl/200 µl
Storage	-20°C, pH7.4 PBS, 0.05% NaN ₃ , 40% Glycerol

Product overview

Description	Anti-TNIK rabbit polyclonal antibody
Applications	ELISA, IHC
Immunogen	Synthetic peptide of human TNIK
Reactivity	Human, Mouse
Content	0.7 mg/ml
Host species	Rabbit
Ig class	Immunogen-specific rabbit IgG
Purification	Antigen affinity purification

Target information

Symbol	TNIK
Full name	TRAF2 and NCK interacting kinase
Synonyms	
Swissprot	Q9UKE5

Target Background

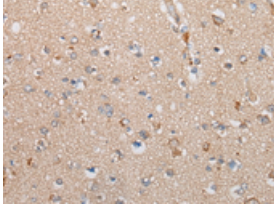
TNIK (TRAF2 and NCK-interacting protein kinase) is a 1,360 amino acid protein that contains one protein kinase domain and belongs to a subfamily of Ser/Thr protein kinases. Expressed ubiquitously with highest expression in brain, heart and skeletal muscle, TNIK functions as a stress-activated Ser/Thr kinase that catalyzes the ATP-dependent phosphorylation of target proteins and is thought to play a role in the response to environmental stress. Additionally, via its catalytic activity, TNIK may participate in cytoskeletal regulation events throughout the cell. TNIK exists as 8 isoforms that are produced by alternative splicing events.

订购热线: 4008-898-798

Applications

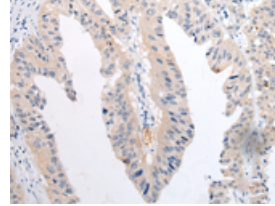
Immunohistochemistry

Predicted cell location: Cytoplasm
Positive control: Human brain
Recommended dilution: 25-100



The image on the left is immunohistochemistry of paraffin-embedded Human brain tissue using ml162948(TNIK Antibody) at dilution 1/25, on the right is treated with synthetic peptide. (Original magnification: $\times 200$)

Predicted cell location: Cytoplasm
Positive control: Human liver cancer
Recommended dilution: 25-100



The image on the left is immunohistochemistry of paraffin-embedded Human liver cancer tissue using ml162948(TNIK Antibody) at dilution 1/25, on the right is treated with synthetic peptide. (Original magnification: $\times 200$)

ELISA

Recommended dilution: 5000-10000

联系电话: 4008-898-798, 021-61725725

联系QQ: 2881505695, 2881505696

邮箱: mlbio_cn@yeah.net

网址: www.mlbio.cn