

Anti-PROK1 antibody

Cat. No.	ml162971
Package	25 µl/100 µl/200 µl
Storage	-20°C, pH7.4 PBS, 0.05% NaN ₃ , 40% Glycerol

Product overview

Description	Anti-PROK1 rabbit polyclonal antibody
Applications	ELISA, IHC
Immunogen	Synthetic peptide of human PROK1
Reactivity	Human, Mouse, Rat
Content	0.8 mg/ml
Host species	Rabbit
Ig class	Immunogen-specific rabbit IgG
Purification	Antigen affinity purification

Target information

Symbol	PROK1
Full name	prokineticin 1
Synonyms	PK1; PRK1; EGVEGF
Swissprot	P58294

Target Background

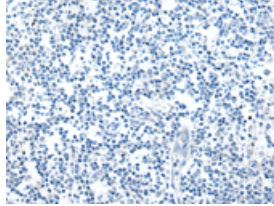
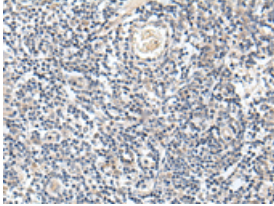
The protein encoded by this gene induces proliferation, migration, and fenestration (the formation of membrane discontinuities) in capillary endothelial cells derived from endocrine glands. It has little or no effect on a variety of other endothelial and non-endothelial cell types. Its expression is restricted to the steroidogenic glands (ovary, testis, adrenal, and placenta), is induced by hypoxia, and often complementary to the expression of vascular endothelial growth factor (VEGF), suggesting that these molecules function in a coordinated manner.

订购热线: 4008-898-798

Applications

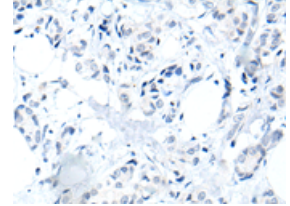
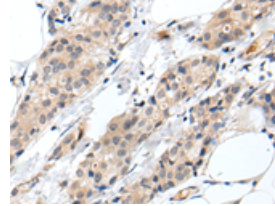
Immunohistochemistry

Predicted cell location: Secreted
Positive control: Human tonsil
Recommended dilution: 25-100



The image on the left is immunohistochemistry of paraffin-embedded Human tonsil tissue using ml162971(PROK1 Antibody) at dilution 1/30, on the right is treated with synthetic peptide. (Original magnification: ×200)

Predicted cell location: Secreted
Positive control: Human breast cancer
Recommended dilution: 25-100



The image on the left is immunohistochemistry of paraffin-embedded Human breast cancer tissue using ml162971(PROK1 Antibody) at dilution 1/30, on the right is treated with synthetic peptide. (Original magnification: ×200)

ELISA

Recommended dilution: 5000-10000

联系电话: 4008-898-798, 021-61725725

联系QQ: 2881505695, 2881505696

邮箱: mlbio_cn@yeah.net

网址: www.mlbio.cn