

Anti-CNP antibody

Cat. No.	ml162987
Package	25 µl/100 µl/200 µl
Storage	-20°C, pH7.4 PBS, 0.05% NaN ₃ , 40% Glycerol

Product overview

Description	Anti-CNP rabbit polyclonal antibody
Applications	ELISA, IHC
Immunogen	Synthetic peptide of human CNP
Reactivity	Human, Rat
Content	0.6 mg/ml
Host species	Rabbit
Ig class	Immunogen-specific rabbit IgG
Purification	Antigen affinity purification

Target information

Symbol	CNP
Full name	2',3'-cyclic nucleotide 3' phosphodiesterase
Synonyms	CNP1
Swissprot	P09543

Target Background

Natriuretic peptides comprise a family of 3 structurally related molecules: atrial natriuretic peptide (ANP), brain natriuretic peptide (BNP), and C-type natriuretic peptide (CNP). ANP and BNP act mainly as cardiac hormones, produced primarily by the atrium and ventricle, respectively, while the gene encoding C-type natriuretic peptide is expressed mainly in the brain. The gene which encodes for CNP maps to human chromosome 2 and the protein is cleaved into CNP-22, CNP-29 and CNP-53. May participate in RNA metabolism in the myelinating cell, CNP is the third most abundant protein in central nervous system myelin.

订购热线: 4008-898-798

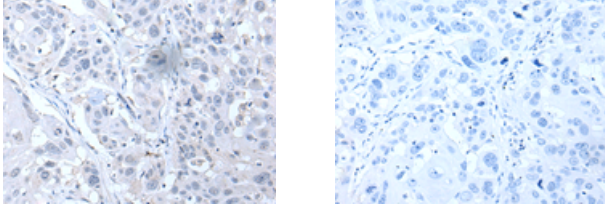
Applications

Immunohistochemistry

Predicted cell location: Cell membrane

Positive control: Human esophagus cancer

Recommended dilution: 20-100

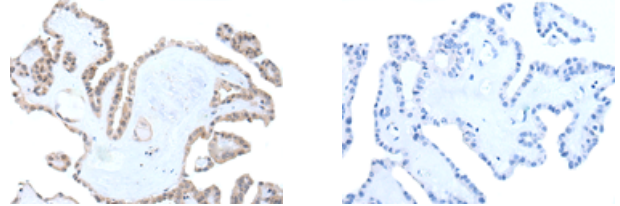


The image on the left is immunohistochemistry of paraffin-embedded Human esophagus cancer tissue using ml162987(CNP Antibody) at dilution 1/25, on the right is treated with synthetic peptide. (Original magnification: ×200)

Predicted cell location: Cell membrane

Positive control: Human thyroid cancer

Recommended dilution: 20-100



The image on the left is immunohistochemistry of paraffin-embedded Human thyroid cancer tissue using ml162987(CNP Antibody) at dilution 1/25, on the right is treated with synthetic peptide. (Original magnification: ×200)

ELISA

Recommended dilution: 5000-10000

联系电话: 4008-898-798, 021-61725725

联系QQ: 2881505695, 2881505696

邮箱: mlbio_cn@yeah.net

网址: www.mlbio.cn