

Anti-CXCL6 antibody

Cat. No.	ml163011
Package	25 µl/100 µl/200 µl
Storage	-20°C, pH7.4 PBS, 0.05% NaN ₃ , 40% Glycerol

Product overview

Description	Anti-CXCL6 rabbit polyclonal antibody
Applications	ELISA, IHC
Immunogen	Synthetic peptide of human CXCL6
Reactivity	Human
Content	1.2 mg/ml
Host species	Rabbit
Ig class	Immunogen-specific rabbit IgG
Purification	Antigen affinity purification

Target information

Symbol	CXCL6
Full name	chemokine (C-X-C motif) ligand 6
Synonyms	GCP2; CKA-3; GCP-2; SCYB6
Swissprot	P80162

Target Background

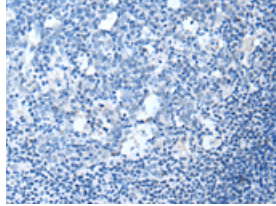
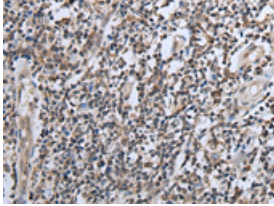
Chemotactic for neutrophil granulocytes. Signals through binding and activation of its receptors (CXCR1 and CXCR2). In addition to its chemotactic and angiogenic properties, it has strong antibacterial activity against Gram-positive and Gram-negative bacteria (90-fold-higher when compared to CXCL5 and CXCL7).

订购热线: 4008-898-798

Applications

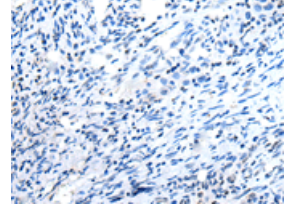
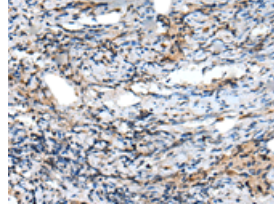
Immunohistochemistry

Predicted cell location: Secreted
Positive control: Human tonsil
Recommended dilution: 50-350



The image on the left is immunohistochemistry of paraffin-embedded Human tonsil tissue using ml163011(CXCL6 Antibody) at dilution 1/60, on the right is treated with synthetic peptide. (Original magnification: $\times 200$)

Predicted cell location: Secreted
Positive control: Human prostate cancer
Recommended dilution: 50-350



The image on the left is immunohistochemistry of paraffin-embedded Human prostate cancer tissue using ml163011(CXCL6 Antibody) at dilution 1/60, on the right is treated with synthetic peptide. (Original magnification: $\times 200$)

ELISA

Recommended dilution: 5000-10000

联系电话: 4008-898-798, 021-61725725

联系QQ: 2881505695, 2881505696

邮箱: mlbio_cn@yeah.net

网址: www.mlbio.cn