

## Anti-LINGO1 antibody

<b>Cat. No.</b>	ml163052
<b>Package</b>	25 µl/100 µl/200 µl
<b>Storage</b>	-20°C, pH7.4 PBS, 0.05% NaN <sub>3</sub> , 40% Glycerol

### Product overview

<b>Description</b>	Anti-LINGO1 rabbit polyclonal antibody
<b>Applications</b>	ELISA, IHC
<b>Immunogen</b>	Synthetic peptide of human LINGO1
<b>Reactivity</b>	Human, Mouse
<b>Content</b>	0.3 mg/ml
<b>Host species</b>	Rabbit
<b>Ig class</b>	Immunogen-specific rabbit IgG
<b>Purification</b>	Antigen affinity purification

### Target information

<b>Symbol</b>	LINGO1
<b>Full name</b>	leucine rich repeat and Ig domain containing 1
<b>Synonyms</b>	LERN1; LRRN6A; UNQ201
<b>Swissprot</b>	Q96FE5

### Target Background

Lingo-1 is a 614-amino acid protein that plays an important role in the negative regulation of myelination by oligodendrocytes in the central nervous system (CNS). Lingo-1 is a nervous system-specific transmembrane protein that interacts with NgR1 and p75 to make up a receptor complex that binds to Nogo, a protein that inhibits axonal regeneration. Reduction of Lingo-1 activity downregulates RhoA (a protein related to cytoskeleton regulation) activity, promotes oligodendrocyte differentiation, and increases axonal myelination in neuronal tissues. Conversely, overexpression of Lingo-1 activates RhoA and inhibits oligodendrocyte differentiation and myelination. Lingo-1 up-regulation may be a characteristic of activity-induced neural plasticity responses. Lingo-1 may be a critical deterrent of myelin and nerve fiber repair in multiple sclerosis, an inflammatory disease that causes gradual destruction of myelin in the CNS.

订购热线: 4008-898-798

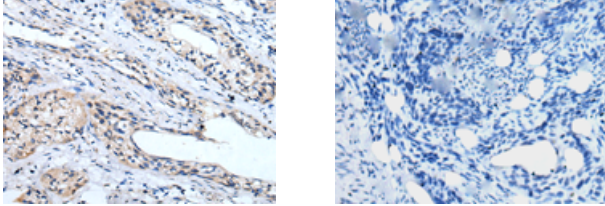
#### Applications

##### Immunohistochemistry

Predicted cell location: Cell membrane

Positive control: Human cervical cancer

Recommended dilution: 10-50



The image on the left is immunohistochemistry of paraffin-embedded Human cervical cancer tissue using ml163052(LINGO1 Antibody) at dilution 1/20, on the right is treated with synthetic peptide. (Original magnification:  $\times 200$ )

##### ELISA

Recommended dilution: 5000-10000

联系电话: 4008-898-798, 021-61725725

联系QQ: 2881505695, 2881505696

邮箱: [mlbio\\_cn@yeah.net](mailto:mlbio_cn@yeah.net)

网址: [www.mlbio.cn](http://www.mlbio.cn)