

Anti-BORCS8 antibody

Cat. No.	ml163073
Package	25 µl/100 µl/200 µl
Storage	-20°C, pH7.4 PBS, 0.05% NaN ₃ , 40% Glycerol

Product overview

Description	Anti-BORCS8 rabbit polyclonal antibody
Applications	ELISA, IHC
Immunogen	Synthetic peptide of human BORCS8
Reactivity	Human
Content	1.2 mg/ml
Host species	Rabbit
Ig class	Immunogen-specific rabbit IgG
Purification	Antigen affinity purification

Target information

Symbol	BORCS8
Full name	BLOC-1 related complex subunit 8
Synonyms	MEF2BNB
Swissprot	Q96FH0

Target Background

BORCS8, also known as BORCS8, the gene represents numerous read-through transcripts that span geneID:729991 and 100271849. Many read-through transcripts are predicted to be nonsense-mediated decay (NMD) candidates, and are thought to be non-coding. Some transcripts are predicted to be capable of translation reinitiation at a downstream AUG, resulting in expression of at least one isoform of myocyte enhancer factor 2B (MEF2B) from this read-through locus.

订购热线: 4008-898-798

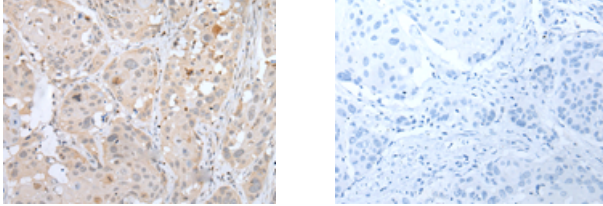
Applications

Immunohistochemistry

Predicted cell location: Cytoplasm and Cell membrane

Positive control: Human esophagus cancer

Recommended dilution: 35-200



The image on the left is immunohistochemistry of paraffin-embedded Human esophagus cancer tissue using ml163073(BORCS8 Antibody) at dilution 1/50, on the right is treated with synthetic peptide. (Original magnification: ×200)

ELISA

Recommended dilution: 5000-10000

联系电话: 4008-898-798, 021-61725725

联系QQ: 2881505695, 2881505696

邮箱: mlbio_cn@yeah.net

网址: www.mlbio.cn