

Anti-MTA3 antibody

Cat. No.	ml163074
Package	25 µl/100 µl/200 µl
Storage	-20°C, pH7.4 PBS, 0.05% NaN ₃ , 40% Glycerol

Product overview

Description	Anti-MTA3 rabbit polyclonal antibody
Applications	ELISA, IHC
Immunogen	Synthetic peptide of human MTA3
Reactivity	Human, Mouse
Content	0.5 mg/ml
Host species	Rabbit
Ig class	Immunogen-specific rabbit IgG
Purification	Antigen affinity purification

Target information

Symbol	MTA3
Full name	metastasis associated 1 family member 3
Synonyms	
Swissprot	Q9BTC8

Target Background

Metastasis-associated protein 3 (MTA3) is a subunit of the Mi-2/NuRD transcriptional corepressor complex. MTA3 and the Mi-2/NuRD complex mediate repression of Snail in breast cancer cells where MTA3 works to maintain a differentiated, epithelial status. The protein is involved in gene expression regulation by covalent modifications of histone proteins. There are two known isoforms of MTA3, a short and a long form. The short isoform binds to ER and sequesters it to the cytoplasm and better non-genomic responses, whereas the long form is found in the nucleus. MTA3 is widely expressed with highest expression in brain, adrenal glands, ovaries and virgin mammary glands. It has been found to be expressed in higher levels in tumors than in adjacent normal tissue in the same individual. Plays a role in maintenance of the normal epithelial architecture through the repression of SNAI1 transcription in a histone deacetylase-dependent manner, and thus the regulation of E-cadherin levels. Contributes to transcriptional repression by BCL6.

订购热线: 4008-898-798

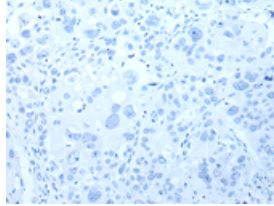
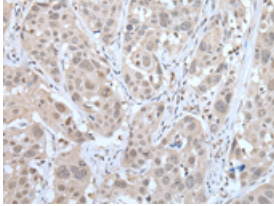
Applications

Immunohistochemistry

Predicted cell location: Nucleus

Positive control: Human esophagus cancer

Recommended dilution: 25-100

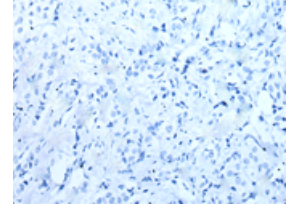
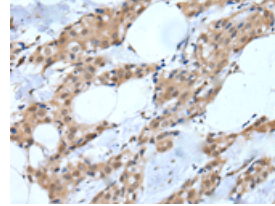


The image on the left is immunohistochemistry of paraffin-embedded Human esophagus cancer tissue using ml163074(MTA3 Antibody) at dilution 1/20, on the right is treated with synthetic peptide. (Original magnification: $\times 200$)

Predicted cell location: Nucleus

Positive control: Human breast cancer

Recommended dilution: 25-100



The image on the left is immunohistochemistry of paraffin-embedded Human breast cancer tissue using ml163074(MTA3 Antibody) at dilution 1/20, on the right is treated with synthetic peptide. (Original magnification: $\times 200$)

ELISA

Recommended dilution: 5000-10000

联系电话: 4008-898-798, 021-61725725

联系QQ: 2881505695, 2881505696

邮箱: mlbio_cn@yeah.net

网址: www.mlbio.cn