

Anti-ANGPTL6 antibody

Cat. No.	ml163089
Package	25 µl/100 µl/200 µl
Storage	-20°C, pH7.4 PBS, 0.05% NaN ₃ , 40% Glycerol

Product overview

Description	Anti-ANGPTL6 rabbit polyclonal antibody
Applications	ELISA, IHC
Immunogen	Synthetic peptide of human ANGPTL6
Reactivity	Human
Content	1.1 mg/ml
Host species	Rabbit
Ig class	Immunogen-specific rabbit IgG
Purification	Antigen affinity purification

Target information

Symbol	ANGPTL6
Full name	angiotensin like 6
Synonyms	AGF; ARP5
Swissprot	Q8NI99

Target Background

May play a role in the wound healing process. May promote epidermal proliferation, remodeling and regeneration. May promote the chemotactic activity of endothelial cells and induce neovascularization. May counteract high-fat diet-induced obesity and related insulin resistance through increased energy expenditure.

订购热线: 4008-898-798

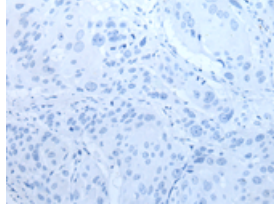
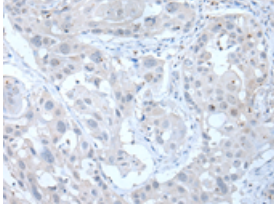
Applications

Immunohistochemistry

Predicted cell location: Secreted

Positive control: Human esophagus cancer

Recommended dilution: 40-250

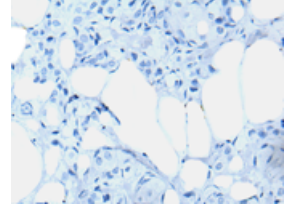
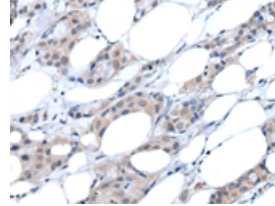


The image on the left is immunohistochemistry of paraffin-embedded Human esophagus cancer tissue using ml163089(ANGPTL6 Antibody) at dilution 1/55, on the right is treated with synthetic peptide. (Original magnification: $\times 200$)

Predicted cell location: Secreted

Positive control: Human breast cancer

Recommended dilution: 40-250



The image on the left is immunohistochemistry of paraffin-embedded Human breast cancer tissue using ml163089(ANGPTL6 Antibody) at dilution 1/55, on the right is treated with synthetic peptide. (Original magnification: $\times 200$)

ELISA

Recommended dilution: 5000-10000

联系电话: 4008-898-798, 021-61725725

联系QQ: 2881505695, 2881505696

邮箱: mlbio_cn@yeah.net

网址: www.mlbio.cn