

## Anti-CTR9 antibody

<b>Cat. No.</b>	ml163118
<b>Package</b>	25 µl/100 µl/200 µl
<b>Storage</b>	-20°C, pH7.4 PBS, 0.05% NaN <sub>3</sub> , 40% Glycerol

### Product overview

<b>Description</b>	Anti-CTR9 rabbit polyclonal antibody
<b>Applications</b>	ELISA, IHC
<b>Immunogen</b>	Synthetic peptide of human CTR9
<b>Reactivity</b>	Human, Mouse
<b>Content</b>	0.4 mg/ml
<b>Host species</b>	Rabbit
<b>Ig class</b>	Immunogen-specific rabbit IgG
<b>Purification</b>	Antigen affinity purification

### Target information

<b>Symbol</b>	CTR9
<b>Full name</b>	CTR9 homolog, Paf1/RNA polymerase II complex component
<b>Synonyms</b>	TSBP; p150; SH2BP1; p150TSP
<b>Swissprot</b>	Q6PD62

### Target Background

CTR9, parafibromin (CDC73; MIM 607393), LEO1 (MIM 610507), and PAF1 (MIM 610506) form the PAF protein complex, which associates with the RNA polymerase II subunit POLR2A (MIM 180660) and with a histone methyltransferase complex (Rozenblatt-Rosen et al., 2005 [PubMed 15632063]).

订购热线: 4008-898-798

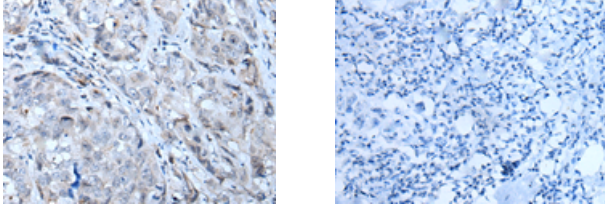
#### Applications

##### Immunohistochemistry

Predicted cell location: Nucleus

Positive control: Human breast cancer

Recommended dilution: 20-100



The image on the left is immunohistochemistry of paraffin-embedded Human breast cancer tissue using ml163118(CTR9 Antibody) at dilution 1/20, on the right is treated with synthetic peptide. (Original magnification:  $\times 200$ )

##### ELISA

Recommended dilution: 500-1000

联系电话: 4008-898-798, 021-61725725

联系QQ: 2881505695, 2881505696

邮箱: [mlbio\\_cn@yeah.net](mailto:mlbio_cn@yeah.net)

网址: [www.mlbio.cn](http://www.mlbio.cn)