

## Anti-NF1 antibody

<b>Cat. No.</b>	ml163125
<b>Package</b>	25 µl/100 µl/200 µl
<b>Storage</b>	-20°C, pH7.4 PBS, 0.05% NaN <sub>3</sub> , 40% Glycerol

### Product overview

<b>Description</b>	Anti-NF1 rabbit polyclonal antibody
<b>Applications</b>	ELISA, IHC
<b>Immunogen</b>	Synthetic peptide of human NF1
<b>Reactivity</b>	Human, Mouse, Rat
<b>Content</b>	1.7 mg/ml
<b>Host species</b>	Rabbit
<b>Ig class</b>	Immunogen-specific rabbit IgG
<b>Purification</b>	Antigen affinity purification

### Target information

<b>Symbol</b>	NF1
<b>Full name</b>	neurofibromin 1
<b>Synonyms</b>	WSS; NFNS; VRNF
<b>Swissprot</b>	P21359

### Target Background

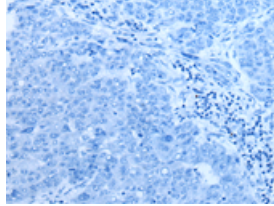
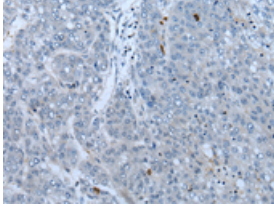
This gene product appears to function as a negative regulator of the ras signal transduction pathway. Mutations in this gene have been linked to neurofibromatosis type 1, juvenile myelomonocytic leukemia and Watson syndrome. The mRNA for this gene is subject to RNA editing (CGA>UGA->Arg1306Term) resulting in premature translation termination. Alternatively spliced transcript variants encoding different isoforms have also been described for this gene.

订购热线: 4008-898-798

### Applications

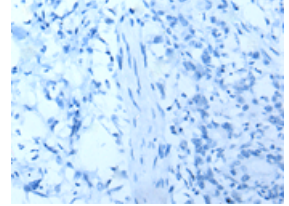
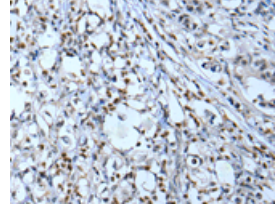
#### Immunohistochemistry

Predicted cell location: Cytoplasm or Nucleus  
Positive control: Human liver cancer  
Recommended dilution: 40-250



The image on the left is immunohistochemistry of paraffin-embedded Human liver cancer tissue using ml163125(NF1 Antibody) at dilution 1/65, on the right is treated with synthetic peptide. (Original magnification: ×200)

Predicted cell location: Cytoplasm or Nucleus  
Positive control: Human gastric cancer  
Recommended dilution: 40-250



The image on the left is immunohistochemistry of paraffin-embedded Human gastric cancer tissue using ml163125(NF1 Antibody) at dilution 1/65, on the right is treated with synthetic peptide. (Original magnification: ×200)

#### ELISA

Recommended dilution: 500-1000

联系电话: 4008-898-798, 021-61725725

联系QQ: 2881505695, 2881505696

邮箱: [mlbio\\_cn@yeah.net](mailto:mlbio_cn@yeah.net)

网址: [www.mlbio.cn](http://www.mlbio.cn)