

Anti-ZBTB11 antibody

Cat. No.	ml163132
Package	25 µl/100 µl/200 µl
Storage	-20°C, pH7.4 PBS, 0.05% NaN ₃ , 40% Glycerol

Product overview

Description	Anti-ZBTB11 rabbit polyclonal antibody
Applications	ELISA, IHC
Immunogen	Synthetic peptide of human ZBTB11
Reactivity	Human
Content	0.4 mg/ml
Host species	Rabbit
Ig class	Immunogen-specific rabbit IgG
Purification	Antigen affinity purification

Target information

Symbol	ZBTB11
Full name	zinc finger and BTB domain containing 11
Synonyms	ZNF913; ZNF-U69274
Swissprot	O95625

Target Background

The Zinc finger and BTB domain-containing protein 11 (ZBTB11) contains 1 BTB (POZ) domain and 12 C₂H₂-type zinc fingers suggesting a role in transcription regulation. The gene encoding ZBTB11 maps to chromosome 3, which contains over 1,100 genes. Notably, a chemokine receptor gene cluster and a variety of human cancer related loci reside on chromosome 3. Particular regions of the chromosome 3 short arm are deleted in many types of cancer cells as well.

订购热线: 4008-898-798

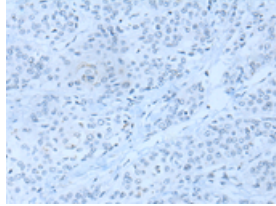
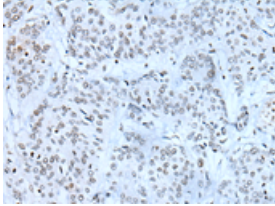
Applications

Immunohistochemistry

Predicted cell location: Nucleus

Positive control: Human prostate cancer

Recommended dilution: 10-50

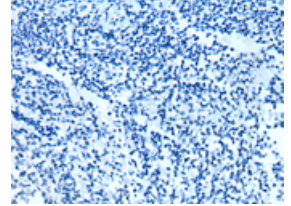
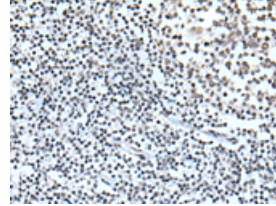


The image on the left is immunohistochemistry of paraffin-embedded Human prostate cancer tissue using ml163132(ZBTB11 Antibody) at dilution 1/20, on the right is treated with synthetic peptide. (Original magnification: $\times 200$)

Predicted cell location: Nucleus

Positive control: Human tonsil

Recommended dilution: 10-50



The image on the left is immunohistochemistry of paraffin-embedded Human tonsil tissue using ml163132(ZBTB11 Antibody) at dilution 1/20, on the right is treated with synthetic peptide. (Original magnification: $\times 200$)

ELISA

Recommended dilution: 5000-10000

联系电话: 4008-898-798, 021-61725725

联系QQ: 2881505695, 2881505696

邮箱: mlbio_cn@yeah.net

网址: www.mlbio.cn