

Anti-ZBTB40 antibody

Cat. No.	ml163135
Package	25 µl/100 µl/200 µl
Storage	-20°C, pH7.4 PBS, 0.05% NaN ₃ , 40% Glycerol

Product overview

Description	Anti-ZBTB40 rabbit polyclonal antibody
Applications	ELISA, IHC
Immunogen	Synthetic peptide of human ZBTB40
Reactivity	Human
Content	0.3 mg/ml
Host species	Rabbit
Ig class	Immunogen-specific rabbit IgG
Purification	Antigen affinity purification

Target information

Symbol	ZBTB40
Full name	zinc finger and BTB domain containing 40
Synonyms	ZNF923
Swissprot	Q9NUA8

Target Background

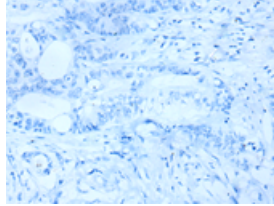
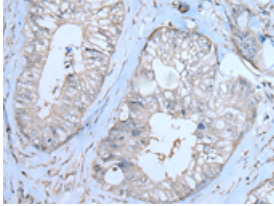
May be involved in transcriptional regulation.

订购热线: 4008-898-798

Applications

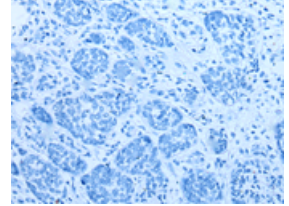
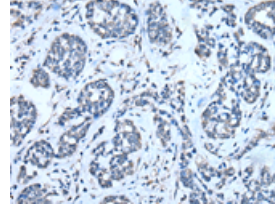
Immunohistochemistry

Predicted cell location: Nucleus or Cytoplasm
Positive control: Human colorectal cancer
Recommended dilution: 20-100



The image on the left is immunohistochemistry of paraffin-embedded Human colorectal cancer tissue using ml163135(ZBTB40 Antibody) at dilution 1/20, on the right is treated with synthetic peptide. (Original magnification: $\times 200$)

Predicted cell location: Nucleus or Cytoplasm
Positive control: Human esophagus cancer
Recommended dilution: 20-100



The image on the left is immunohistochemistry of paraffin-embedded Human esophagus cancer tissue using ml163135(ZBTB40 Antibody) at dilution 1/20, on the right is treated with synthetic peptide. (Original magnification: $\times 200$)

ELISA

Recommended dilution: 5000-10000

联系电话: 4008-898-798, 021-61725725

联系QQ: 2881505695, 2881505696

邮箱: mlbio_cn@yeah.net

网址: www.mlbio.cn