

Anti-ZNF787 antibody

Cat. No. ml163148
Package 25 µl/100 µl/200 µl
Storage -20°C, pH7.4 PBS, 0.05% NaN₃, 40% Glycerol

Product overview

Description Anti-ZNF787 rabbit polyclonal antibody
Applications ELISA, IHC
Immunogen Synthetic peptide of human ZNF787
Reactivity Human, Mouse
Content 1.1 mg/ml
Host species Rabbit
Ig class Immunogen-specific rabbit IgG
Purification Antigen affinity purification

Target information

Symbol ZNF787
Full name zinc finger protein 787
Synonyms TIP20
Swissprot Q6DD87

Target Background

May be involved in transcriptional regulation.

订购热线: 4008-898-798

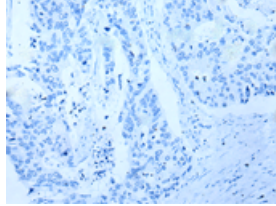
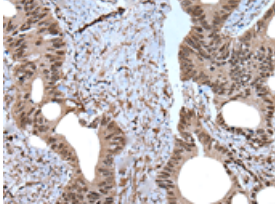
Applications

Immunohistochemistry

Predicted cell location: Nucleus

Positive control: Human colorectal cancer

Recommended dilution: 30-150

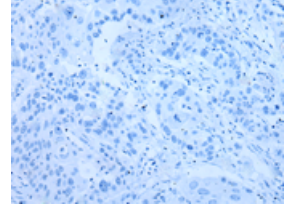
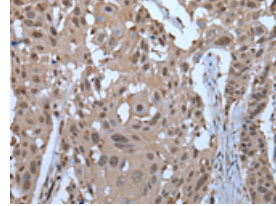


The image on the left is immunohistochemistry of paraffin-embedded Human colorectal cancer tissue using ml163148(ZNF787 Antibody) at dilution 1/45, on the right is treated with synthetic peptide. (Original magnification: $\times 200$)

Predicted cell location: Nucleus

Positive control: Human esophagus cancer

Recommended dilution: 30-150



The image on the left is immunohistochemistry of paraffin-embedded Human esophagus cancer tissue using ml163148(ZNF787 Antibody) at dilution 1/45, on the right is treated with synthetic peptide. (Original magnification: $\times 200$)

ELISA

Recommended dilution: 5000-10000

联系电话: 4008-898-798, 021-61725725

联系QQ: 2881505695, 2881505696

邮箱: mlbio_cn@yeah.net

网址: www.mlbio.cn