

Anti-XIRP1 antibody

Cat. No. ml163177
Package 25 µl/100 µl/200 µl
Storage -20°C, pH7.4 PBS, 0.05% NaN₃, 40% Glycerol

Product overview

Description Anti-XIRP1 rabbit polyclonal antibody
Applications ELISA, IHC
Immunogen Synthetic peptide of human XIRP1
Reactivity Human
Content 1.3 mg/ml
Host species Rabbit
Ig class Immunogen-specific rabbit IgG
Purification Antigen affinity purification

Target information

Symbol XIRP1
Full name xin actin binding repeat containing 1
Synonyms Xin; CMYA1
Swissprot Q702N8

Target Background

Protects actin filaments from depolymerization.

订购热线: 4008-898-798

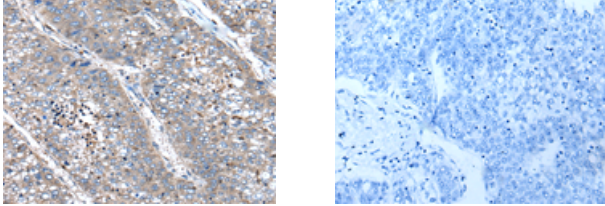
Applications

Immunohistochemistry

Predicted cell location: Cytoplasm

Positive control: Human liver cancer

Recommended dilution: 50-300



The image on the left is immunohistochemistry of paraffin-embedded Human liver cancer tissue using ml163177(XIRP1 Antibody) at dilution 1/90, on the right is treated with synthetic peptide. (Original magnification: $\times 200$)

ELISA

Recommended dilution: 5000-10000

联系电话: 4008-898-798, 021-61725725

联系QQ: 2881505695, 2881505696

邮箱: mlbio_cn@yeah.net

网址: www.mlbio.cn