

Anti-UBAC2 antibody

Cat. No.	ml163217
Package	25 µl/100 µl/200 µl
Storage	-20°C, pH7.4 PBS, 0.05% NaN ₃ , 40% Glycerol

Product overview

Description	Anti-UBAC2 rabbit polyclonal antibody
Applications	ELISA, IHC
Immunogen	Synthetic peptide of human UBAC2
Reactivity	Human, Mouse
Content	0.2 mg/ml
Host species	Rabbit
Ig class	Immunogen-specific rabbit IgG
Purification	Antigen affinity purification

Target information

Symbol	UBAC2
Full name	UBA domain containing 2
Synonyms	PHGDHL1
Swissprot	Q8NBM4

Target Background

UBAC2 (ubiquitin-associated domain-containing protein 2), also known as PHGDHL1 (phosphoglycerate dehydrogenase-like protein 1), is a 344 amino acid multi-pass membrane protein that contains one UBA domain and is expressed as multiple alternatively spliced isoforms. The gene encoding UBAC2 maps to human chromosome 13, which houses over 400 genes, such as BRCA2 and RB1, and comprises nearly 4% of the human genome. As with most chromosomes, polysomy of part or all of chromosome 13 is deleterious to development and decreases the odds of survival. Trisomy 13, also known as Patau syndrome, is deadly and the few who survive past one year suffer from permanent neurologic defects, difficulty eating and vulnerability to serious respiratory infections.

订购热线: 4008-898-798

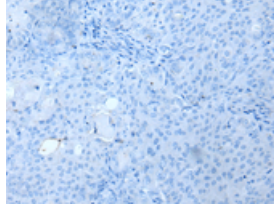
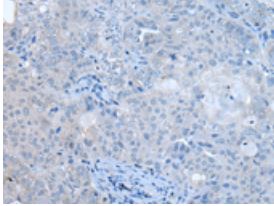
Applications

Immunohistochemistry

Predicted cell location: Cytoplasm

Positive control: Human ovarian cancer

Recommended dilution: 20-100

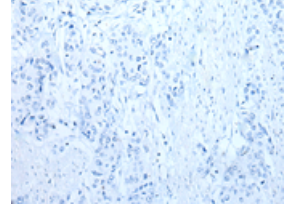
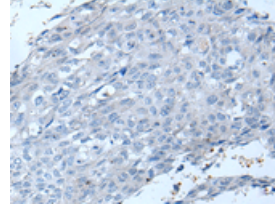


The image on the left is immunohistochemistry of paraffin-embedded Human ovarian cancer tissue using ml163217(UBAC2 Antibody) at dilution 1/20, on the right is treated with synthetic peptide. (Original magnification: $\times 200$)

Predicted cell location: Cytoplasm

Positive control: Human lung cancer

Recommended dilution: 20-100



The image on the left is immunohistochemistry of paraffin-embedded Human lung cancer tissue using ml163217(UBAC2 Antibody) at dilution 1/20, on the right is treated with synthetic peptide. (Original magnification: $\times 200$)

ELISA

Recommended dilution: 5000-10000

联系电话: 4008-898-798, 021-61725725

联系QQ: 2881505695, 2881505696

邮箱: mlbio_cn@yeah.net

网址: www.mlbio.cn