

Anti-UGGT2 antibody

Cat. No.	ml163231
Package	25 µl/100 µl/200 µl
Storage	-20°C, pH7.4 PBS, 0.05% NaN ₃ , 40% Glycerol

Product overview

Description	Anti-UGGT2 rabbit polyclonal antibody
Applications	ELISA, IHC
Immunogen	Synthetic peptide of human UGGT2
Reactivity	Human
Content	0.3 mg/ml
Host species	Rabbit
Ig class	Immunogen-specific rabbit IgG
Purification	Antigen affinity purification

Target information

Symbol	UGGT2
Full name	UDP-glucose glycoprotein glucosyltransferase 2
Synonyms	UGT2; HUGT2; UGCGL2
Swissprot	Q9NYU1

Target Background

UDP-glucose:glycoprotein glucosyltransferase (UGT) is a soluble protein of the endoplasmic reticulum (ER) that selectively reglucosylates unfolded glycoproteins, thus providing quality control for protein transport out of the ER.

订购热线: 4008-898-798

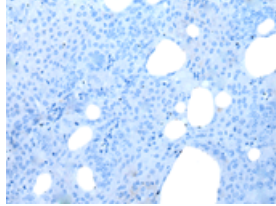
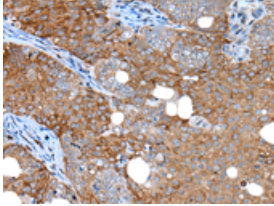
Applications

Immunohistochemistry

Predicted cell location: Cytoplasm

Positive control: Human ovarian cancer

Recommended dilution: 20-100

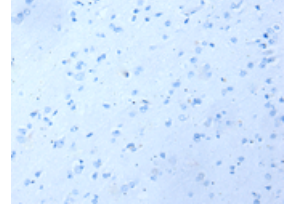
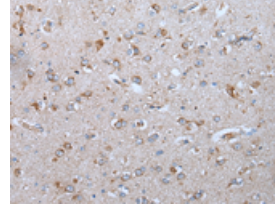


The image on the left is immunohistochemistry of paraffin-embedded Human ovarian cancer tissue using ml163231(UGGT2 Antibody) at dilution 1/20, on the right is treated with synthetic peptide. (Original magnification: $\times 200$)

Predicted cell location: Cytoplasm

Positive control: Human brain

Recommended dilution: 20-100



The image on the left is immunohistochemistry of paraffin-embedded Human brain tissue using ml163231(UGGT2 Antibody) at dilution 1/20, on the right is treated with synthetic peptide. (Original magnification: $\times 200$)

ELISA

Recommended dilution: 5000-10000

联系电话: 4008-898-798, 021-61725725

联系QQ: 2881505695, 2881505696

邮箱: mlbio_cn@yeah.net

网址: www.mlbio.cn