

Anti-PRSS50 antibody

Cat. No.	ml163300
Package	25 µl/100 µl/200 µl
Storage	-20°C, pH7.4 PBS, 0.05% NaN ₃ , 40% Glycerol

Product overview

Description	Anti-PRSS50 rabbit polyclonal antibody
Applications	ELISA, IHC
Immunogen	Synthetic peptide of human PRSS50
Reactivity	Human
Content	1.2 mg/ml
Host species	Rabbit
Ig class	Immunogen-specific rabbit IgG
Purification	Antigen affinity purification

Target information

Symbol	PRSS50
Full name	protease, serine 50
Synonyms	CT20; TSP50
Swissprot	Q9UI38

Target Background

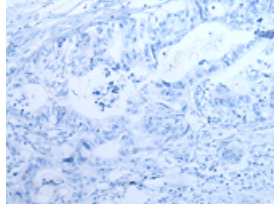
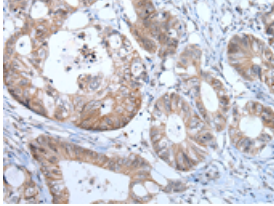
May be involved in proteolysis through its threonine endopeptidase activity.

订购热线: 4008-898-798

Applications

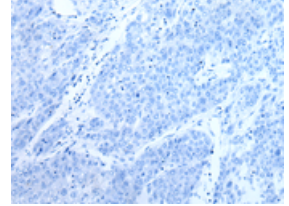
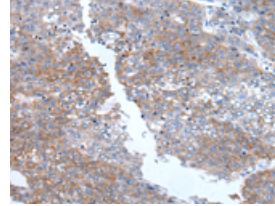
Immunohistochemistry

Predicted cell location: Cytoplasm and Cell membrane
Positive control: Human colorectal cancer
Recommended dilution: 40-200



The image on the left is immunohistochemistry of paraffin-embedded Human colorectal cancer tissue using ml163300(PRSS50 Antibody) at dilution 1/65, on the right is treated with synthetic peptide. (Original magnification: $\times 200$)

Predicted cell location: Cytoplasm and Cell membrane
Positive control: Human liver cancer
Recommended dilution: 40-200



The image on the left is immunohistochemistry of paraffin-embedded Human liver cancer tissue using ml163300(PRSS50 Antibody) at dilution 1/65, on the right is treated with synthetic peptide. (Original magnification: $\times 200$)

ELISA

Recommended dilution: 5000-10000

联系电话: 4008-898-798, 021-61725725

联系QQ: 2881505695, 2881505696

邮箱: mlbio_cn@yeah.net

网址: www.mlbio.cn