

Anti-C14orf169 antibody

Cat. No.	ml163324
Package	25 µl/100 µl/200 µl
Storage	-20°C, pH7.4 PBS, 0.05% NaN ₃ , 40% Glycerol

Product overview

Description	Anti-C14orf169 rabbit polyclonal antibody
Applications	ELISA, IHC
Immunogen	Synthetic peptide of human C14orf169
Reactivity	Human, Mouse, Rat
Content	0.8 mg/ml
Host species	Rabbit
Ig class	Immunogen-specific rabbit IgG
Purification	Antigen affinity purification

Target information

Symbol	C14orf169
Full name	chromosome 14 open reading frame 169
Synonyms	ROX; NO66; MAPJD; URLC2; hsNO66
Swissprot	Q9H6W3

Target Background

Oxygenase that can act as both a histone lysine demethylase and a ribosomal histidine hydroxylase. Specifically demethylates 'Lys-4' (H3K4me) and 'Lys-36' (H3K36me) of histone H3, thereby playing a central role in histone code. Preferentially demethylates trimethylated H3 'Lys-4' (H3K4me₃) and monomethylated H3 'Lys-4' (H3K4me₁) residues, while it has weaker activity for dimethylated H3 'Lys-36' (H3K36me₂). Also catalyzes the hydroxylation of 60S ribosomal protein L8 on 'His-216'. Acts as a regulator of osteoblast differentiation via its interaction with SP7/OSX by demethylating H3K4me and H3K36me, thereby inhibiting SP7/OSX-mediated promoter activation (By similarity). May also play a role in ribosome biogenesis and in the replication or remodeling of certain heterochromatic region. Participates in MYC-induced transcriptional activation.

订购热线: 4008-898-798

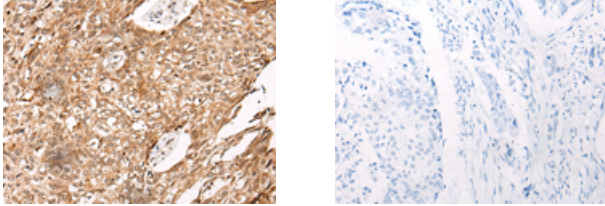
Applications

Immunohistochemistry

Predicted cell location: Nucleus

Positive control: Human lung cancer

Recommended dilution: 30-150



The image on the left is immunohistochemistry of paraffin-embedded Human lung cancer tissue using ml163324(C14orf169 Antibody) at dilution 1/45, on the right is treated with synthetic peptide. (Original magnification: $\times 200$)

ELISA

Recommended dilution: 5000-10000

联系电话: 4008-898-798, 021-61725725

联系QQ: 2881505695, 2881505696

邮箱: mlbio_cn@yeah.net

网址: www.mlbio.cn