

Anti-CABIN1 antibody

Cat. No.	ml163361
Package	25 µl/100 µl/200 µl
Storage	-20°C, pH7.4 PBS, 0.05% NaN ₃ , 40% Glycerol

Product overview

Description	Anti-CABIN1 rabbit polyclonal antibody
Applications	ELISA, IHC
Immunogen	Synthetic peptide of human CABIN1
Reactivity	Human, Rat
Content	0.7 mg/ml
Host species	Rabbit
Ig class	Immunogen-specific rabbit IgG
Purification	Antigen affinity purification

Target information

Symbol	CABIN1
Full name	calcineurin binding protein 1
Synonyms	CAIN; PPP3IN; KB-318B8.7
Swissprot	Q9Y6J0

Target Background

Calcineurin plays an important role in the T-cell receptor-mediated signal transduction pathway. The protein encoded by this gene binds specifically to the activated form of calcineurin and inhibits calcineurin-mediated signal transduction. The encoded protein is found in the nucleus and contains a leucine zipper domain as well as several PEST motifs, sequences which confer targeted degradation to those proteins which contain them. Alternative splicing results in multiple transcript variants encoding two different isoforms.

订购热线: 4008-898-798

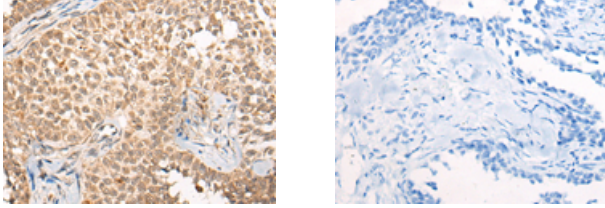
Applications

Immunohistochemistry

Predicted cell location: Nucleus and Cytoplasm

Positive control: Human ovarian cancer

Recommended dilution: 40-200



The image on the left is immunohistochemistry of paraffin-embedded Human ovarian cancer tissue using ml163361(CABIN1 Antibody) at dilution 1/50, on the right is treated with synthetic peptide. (Original magnification: $\times 200$)

ELISA

Recommended dilution: 5000-10000

联系电话: 4008-898-798, 021-61725725

联系QQ: 2881505695, 2881505696

邮箱: mlbio_cn@yeah.net

网址: www.mlbio.cn