

Anti-CEP89 antibody

Cat. No.	ml163438
Package	25 µl/100 µl/200 µl
Storage	-20°C, pH7.4 PBS, 0.05% NaN ₃ , 40% Glycerol

Product overview

Description	Anti-CEP89 rabbit polyclonal antibody
Applications	ELISA, IHC
Immunogen	Synthetic peptide of human CEP89
Reactivity	Human, Mouse
Content	0.6 mg/ml
Host species	Rabbit
Ig class	Immunogen-specific rabbit IgG
Purification	Antigen affinity purification

Target information

Symbol	CEP89
Full name	centrosomal protein 89
Synonyms	CEP123; CCDC123
Swissprot	Q96ST8

Target Background

Required for ciliogenesis. Also plays a role in mitochondrial metabolism where it may modulate complex IV activity.

订购热线: 4008-898-798

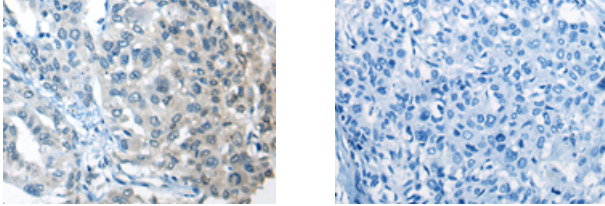
Applications

Immunohistochemistry

Predicted cell location: Cytoplasm

Positive control: Human liver cancer

Recommended dilution: 10-50



The image on the left is immunohistochemistry of paraffin-embedded Human liver cancer tissue using ml163438(CEP89 Antibody) at dilution 1/25, on the right is treated with synthetic peptide. (Original magnification: $\times 200$)

ELISA

Recommended dilution: 5000-10000

联系电话: 4008-898-798, 021-61725725

联系QQ: 2881505695, 2881505696

邮箱: mlbio_cn@yeah.net

网址: www.mlbio.cn