

Anti-ZC2HC1A antibody

Cat. No.	ml163442
Package	25 µl/100 µl/200 µl
Storage	-20°C, pH7.4 PBS, 0.05% NaN ₃ , 40% Glycerol

Product overview

Description	Anti-ZC2HC1A rabbit polyclonal antibody
Applications	ELISA, IHC
Immunogen	Synthetic peptide of human ZC2HC1A
Reactivity	Human, Mouse
Content	0.6 mg/ml
Host species	Rabbit
Ig class	Immunogen-specific rabbit IgG
Purification	Antigen affinity purification

Target information

Symbol	ZC2HC1A
Full name	zinc finger C2HC-type containing 1A
Synonyms	CGI-62; C8orf70; FAM164A
Swissprot	Q96GY0

Target Background

The function of this protein remains unknown.

订购热线: 4008-898-798

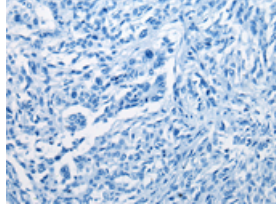
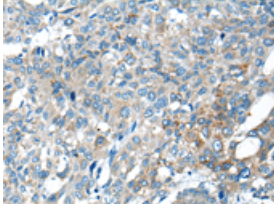
Applications

Immunohistochemistry

Predicted cell location: Cytoplasm

Positive control: Human liver cancer

Recommended dilution: 20-100

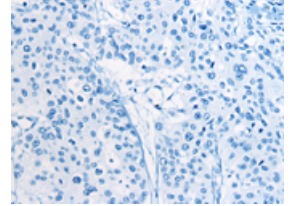
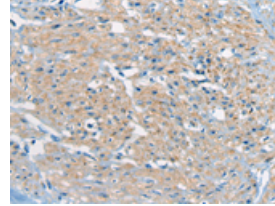


The image on the left is immunohistochemistry of paraffin-embedded Human liver cancer tissue using ml163442(ZC2HC1A Antibody) at dilution 1/30, on the right is treated with synthetic peptide. (Original magnification: $\times 200$)

Predicted cell location: Cytoplasm

Positive control: Human prostate cancer

Recommended dilution: 20-100



The image on the left is immunohistochemistry of paraffin-embedded Human prostate cancer tissue using ml163442(ZC2HC1A Antibody) at dilution 1/30, on the right is treated with synthetic peptide. (Original magnification: $\times 200$)

ELISA

Recommended dilution: 5000-10000

联系电话: 4008-898-798, 021-61725725

联系QQ: 2881505695, 2881505696

邮箱: mlbio_cn@yeah.net

网址: www.mlbio.cn