

Anti-CLTCL1 antibody

Cat. No.	ml163471
Package	25 µl/100 µl/200 µl
Storage	-20°C, pH7.4 PBS, 0.05% NaN ₃ , 40% Glycerol

Product overview

Description	Anti-CLTCL1 rabbit polyclonal antibody
Applications	ELISA, IHC
Immunogen	Synthetic peptide of human CLTCL1
Reactivity	Human
Content	0.6 mg/ml
Host species	Rabbit
Ig class	Immunogen-specific rabbit IgG
Purification	Antigen affinity purification

Target information

Symbol	CLTCL1
Full name	clathrin heavy chain like 1
Synonyms	CLTD; CHC22; CLH22; CLTCL
Swissprot	P53675

Target Background

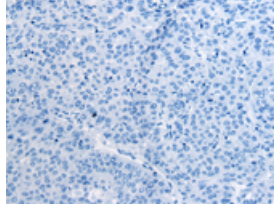
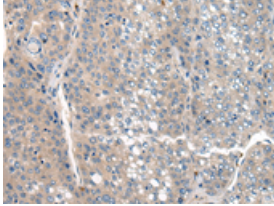
This gene is a member of the clathrin heavy chain family and encodes a major protein of the polyhedral coat of coated pits and vesicles. Chromosomal aberrations involving this gene are associated with meningioma, DiGeorge syndrome, and velo-cardio-facial syndrome. Multiple transcript variants encoding different isoforms have been found for this gene.

订购热线: 4008-898-798

Applications

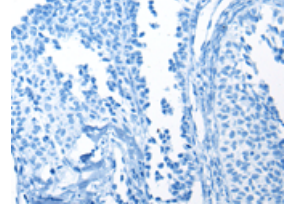
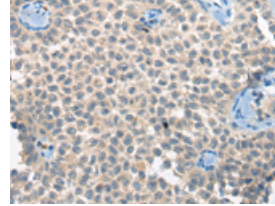
Immunohistochemistry

Predicted cell location: Cytoplasm
Positive control: Human liver cancer
Recommended dilution: 40-200



The image on the left is immunohistochemistry of paraffin-embedded Human liver cancer tissue using ml163471 (CLTCL1 Antibody) at dilution 1/60, on the right is treated with synthetic peptide. (Original magnification: $\times 200$)

Predicted cell location: Cytoplasm
Positive control: Human ovarian cancer
Recommended dilution: 40-200



The image on the left is immunohistochemistry of paraffin-embedded Human ovarian cancer tissue using ml163471 (CLTCL1 Antibody) at dilution 1/60, on the right is treated with synthetic peptide. (Original magnification: $\times 200$)

ELISA

Recommended dilution: 5000-10000

联系电话: 4008-898-798, 021-61725725

联系QQ: 2881505695, 2881505696

邮箱: mlbio_cn@yeah.net

网址: www.mlbio.cn