

Anti-SCN5A antibody

Cat. No.	ml163554
Package	25 µl/100 µl/200 µl
Storage	-20°C, pH7.4 PBS, 0.05% NaN ₃ , 40% Glycerol

Product overview

Description	Anti-SCN5A rabbit polyclonal antibody
Applications	ELISA, IHC
Immunogen	Synthetic peptide of human SCN5A
Reactivity	Human, Mouse, Rat
Content	1.4 mg/ml
Host species	Rabbit
Ig class	Immunogen-specific rabbit IgG
Purification	Antigen affinity purification

Target information

Symbol	SCN5A
Full name	sodium voltage-gated channel alpha subunit 5
Synonyms	HB1; HB2; HH1; IVE; VF1; HBBD; ICCD; LQT3; SSS1; CDCD2; CMD1E; CMPD2; PFHB1; Nav1.5
Swissprot	Q14524

Target Background

The protein encoded by this gene is an integral membrane protein and tetrodotoxin-resistant voltage-gated sodium channel subunit. This protein is found primarily in cardiac muscle and is responsible for the initial upstroke of the action potential in an electrocardiogram. Defects in this gene are a cause of long QT syndrome type 3 (LQT3), an autosomal dominant cardiac disease. Alternative splicing results in several transcript variants encoding different isoforms.

订购热线: 4008-898-798

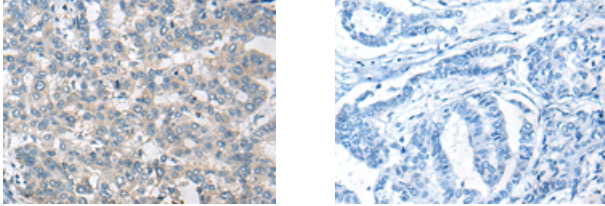
Applications

Immunohistochemistry

Predicted cell location: Cell membrane

Positive control: Human liver cancer

Recommended dilution: 25-100



The image on the left is immunohistochemistry of paraffin-embedded Human liver cancer tissue using ml163554(SCN5A Antibody) at dilution 1/40, on the right is treated with synthetic peptide. (Original magnification: ×200)

ELISA

Recommended dilution: 5000-10000

联系电话: 4008-898-798, 021-61725725

联系QQ: 2881505695, 2881505696

邮箱: mlbio_cn@yeah.net

网址: www.mlbio.cn