

Anti-MORF4L2 antibody

| | |
|-----------------|---|
| Cat. No. | ml163567 |
| Package | 25 µl/100 µl/200 µl |
| Storage | -20°C, pH7.4 PBS, 0.05% NaN ₃ , 40% Glycerol |

Product overview

| | |
|---------------------|---|
| Description | Anti-MORF4L2 rabbit polyclonal antibody |
| Applications | ELISA, IHC |
| Immunogen | Synthetic peptide of human MORF4L2 |
| Reactivity | Human, Mouse, Rat |
| Content | 0.8 mg/ml |
| Host species | Rabbit |
| Ig class | Immunogen-specific rabbit IgG |
| Purification | Antigen affinity purification |

Target information

| | |
|------------------|---------------------------|
| Symbol | MORF4L2 |
| Full name | mortality factor 4 like 2 |
| Synonyms | MRGX; MORFL2 |
| Swissprot | Q15014 |

Target Background

The members of the mortality factor family include mortality factor 4 (MORF4), mortality factor 4 like 1 (MORF4L1), also known as MORF4-related gene 15 (MRG15), and mortality factor 4 like 2 (MORF4L2), also known as MORF-4 related gene X (MRGX). The human MORF4 gene maps to chromosome 4q34.1. MORF4 induces a senescent-like phenotype in complementation group B immortal cell lines. The genes encoding MORF4L1 and MORF4L2 map to chromosomes 15q25.1 and Xq22.2, respectively. MORF4, MORF4L1 and MORF4L2 each contain a C-terminal leucine zipper. An association between MORF4L1, Rb (retinoblastoma tumor suppressor) and PAM14 (protein associated with MORF4L1) suggests a role for MORF4L1 in transcription regulation. MORF4L1 also associates with the histone acetyl transferase MOF. In addition, MORF4, MORF4L1 and MORF4L2 interact with mSin3A and TLE (transducin-like enhancer of split). The MORF/mSin3A/TLE association may repress transcription. In Purkinje cells, MORF4L1 localizes to the dendrites and the nuclei.

订购热线: 4008-898-798

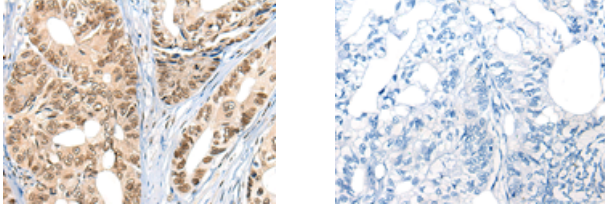
Applications

Immunohistochemistry

Predicted cell location: Nucleus and Cytoplasm

Positive control: Human gastric cancer

Recommended dilution: 25-100



The image on the left is immunohistochemistry of paraffin-embedded Human gastric cancer tissue using ml163567(MORF4L2 Antibody) at dilution 1/25, on the right is treated with synthetic peptide. (Original magnification: $\times 200$)

ELISA

Recommended dilution: 5000-10000

联系电话: 4008-898-798, 021-61725725

联系QQ: 2881505695, 2881505696

邮箱: mlbio_cn@yeah.net

网址: www.mlbio.cn