

Anti-ATG2A antibody

Cat. No.	ml163573
Package	25 µl/100 µl/200 µl
Storage	-20°C, pH7.4 PBS, 0.05% NaN ₃ , 40% Glycerol

Product overview

Description	Anti-ATG2A rabbit polyclonal antibody
Applications	ELISA, IHC
Immunogen	Synthetic peptide of human ATG2A
Reactivity	Human, Mouse
Content	0.4 mg/ml
Host species	Rabbit
Ig class	Immunogen-specific rabbit IgG
Purification	Antigen affinity purification

Target information

Symbol	ATG2A
Full name	autophagy related 2A
Synonyms	
Swissprot	Q2TAZ0

Target Background

Atg2A (TG2 autophagy related 2 homolog A) is a 1,938 amino acid protein that belongs to the ATG2 family and may play a role in vesicle assembly. Encoded by a gene that maps to human chromosome 11q13.1, Atg2A is conserved in chimpanzee, dog, cow, mouse and rat, and exists as four alternatively spliced isoforms. Undetected in adult tissues, including heart, brain, placenta, lung, liver and skeletal muscle, Atg2A regulation may act as a distinct indicator of autophagic programmed cell death. Atg2A is upregulated in both etoposide- and doxorubicin-induced apoptosis of HeLa cells, suggesting that Atg2A functions as a novel biomarker of topoisomerase II inhibitor-mediated apoptosis. Atg2A associates with Atg2B, indicating that these two related proteins also functionally interact. Atg2A frameshift mutations are linked to gastric and colorectal carcinomas with high microsatellite instability and may contribute to cancer development by deregulating the autophagy process. Required for both autophagosome formation and regulation of lipid droplet morphology and dispersion.

订购热线: 4008-898-798

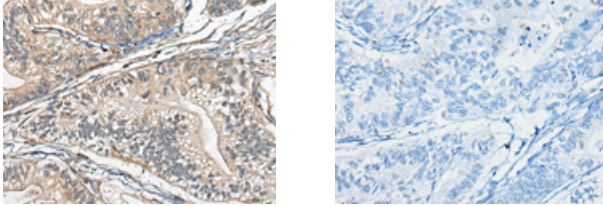
Applications

Immunohistochemistry

Predicted cell location: Cytoplasm

Positive control: Human gastric cancer

Recommended dilution: 20-100



The image on the left is immunohistochemistry of paraffin-embedded Human gastric cancer tissue using ml163573(ATG2A Antibody) at dilution 1/20, on the right is treated with synthetic peptide. (Original magnification: $\times 200$)

ELISA

Recommended dilution: 5000-10000

联系电话: 4008-898-798, 021-61725725

联系QQ: 2881505695, 2881505696

邮箱: mlbio_cn@yeah.net

网址: www.mlbio.cn