

## Anti-CR1L antibody

<b>Cat. No.</b>	ml163643
<b>Package</b>	25 µl/100 µl/200 µl
<b>Storage</b>	-20°C, pH7.4 PBS, 0.05% NaN <sub>3</sub> , 40% Glycerol

### Product overview

<b>Description</b>	Anti-CR1L rabbit polyclonal antibody
<b>Applications</b>	ELISA, IHC
<b>Immunogen</b>	Synthetic peptide of human CR1L
<b>Reactivity</b>	Human
<b>Content</b>	1.5 mg/ml
<b>Host species</b>	Rabbit
<b>Ig class</b>	Immunogen-specific rabbit IgG
<b>Purification</b>	Antigen affinity purification

### Target information

<b>Symbol</b>	CR1L
<b>Full name</b>	complement C3b/C4b receptor 1 like
<b>Synonyms</b>	
<b>Swissprot</b>	Q2VPA4

### Target Background

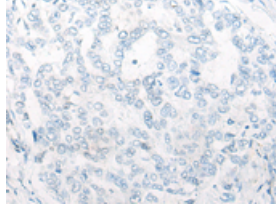
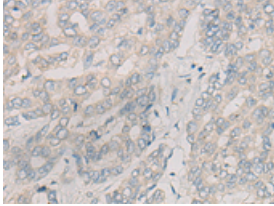
The C3b/C4b receptor (CR1; 120620) is important in immune complex processing. On phagocytic cells it promotes the adherence and sometimes the endocytosis of C3b- and C4b-coated particles. CR1 is composed largely of a tandemly repeated motif of approximately 60 amino acids, the short consensus repeat (SCR).

订购热线: 4008-898-798

### Applications

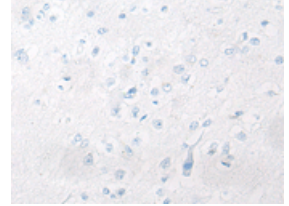
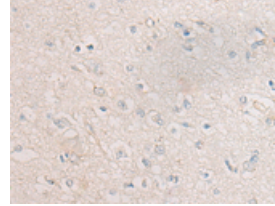
#### Immunohistochemistry

Predicted cell location: Cytoplasm and Cell membrane  
Positive control: Human liver cancer  
Recommended dilution: 25-100



The image on the left is immunohistochemistry of paraffin-embedded Human liver cancer tissue using ml163643(CR1L Antibody) at dilution 1/45, on the right is treated with synthetic peptide. (Original magnification:  $\times 200$ )

Predicted cell location: Cytoplasm and Cell membrane  
Positive control: Human brain  
Recommended dilution: 25-100



The image on the left is immunohistochemistry of paraffin-embedded Human brain tissue using ml163643(CR1L Antibody) at dilution 1/45, on the right is treated with synthetic peptide. (Original magnification:  $\times 200$ )

#### ELISA

Recommended dilution: 5000-10000

联系电话: 4008-898-798, 021-61725725

联系QQ: 2881505695, 2881505696

邮箱: [mlbio\\_cn@yeah.net](mailto:mlbio_cn@yeah.net)

网址: [www.mlbio.cn](http://www.mlbio.cn)