

## Anti-UQCR10 antibody

<b>Cat. No.</b>	ml163661
<b>Package</b>	25 µl/100 µl/200 µl
<b>Storage</b>	-20°C, pH7.4 PBS, 0.05% NaN <sub>3</sub> , 40% Glycerol

### Product overview

<b>Description</b>	Anti-UQCR10 rabbit polyclonal antibody
<b>Applications</b>	ELISA, IHC
<b>Immunogen</b>	Synthetic peptide of human UQCR10
<b>Reactivity</b>	Human, Mouse
<b>Content</b>	0.7 mg/ml
<b>Host species</b>	Rabbit
<b>Ig class</b>	Immunogen-specific rabbit IgG
<b>Purification</b>	Antigen affinity purification

### Target information

<b>Symbol</b>	UQCR10
<b>Full name</b>	ubiquinol-cytochrome c reductase, complex III subunit X
<b>Synonyms</b>	QCR9; UCRC; HSPC051; HSPC119; HSPC151; UCCR7.2
<b>Swissprot</b>	Q9UDW1

### Target Background

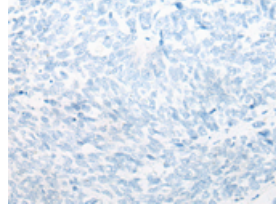
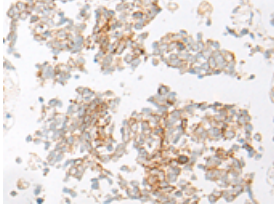
UCRC is a subunit of mitochondrial complex III (ubiquinol-cytochrome c reductase; EC 1.10.2.2), which forms the middle segment of the respiratory chain of the inner mitochondrial membrane (Schagger et al., 1995 [PubMed 8592474]).

订购热线: 4008-898-798

### Applications

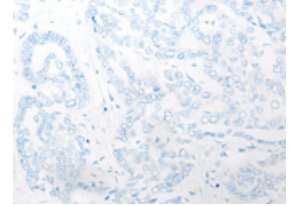
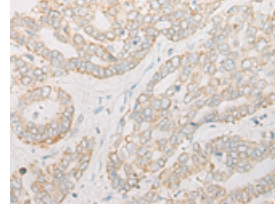
#### Immunohistochemistry

Predicted cell location: Mitochondrion inner membrane  
Positive control: Human lung cancer  
Recommended dilution: 20-100



The image on the left is immunohistochemistry of paraffin-embedded Human lung cancer tissue using ml163661(UQCR10 Antibody) at dilution 1/25, on the right is treated with synthetic peptide. (Original magnification: ×200)

Predicted cell location: Mitochondrion inner membrane  
Positive control: Human liver cancer  
Recommended dilution: 20-100



The image on the left is immunohistochemistry of paraffin-embedded Human liver cancer tissue using ml163661(UQCR10 Antibody) at dilution 1/25, on the right is treated with synthetic peptide. (Original magnification: ×200)

#### ELISA

Recommended dilution: 5000-10000

联系电话: 4008-898-798, 021-61725725

联系QQ: 2881505695, 2881505696

邮箱: [mlbio\\_cn@yeah.net](mailto:mlbio_cn@yeah.net)

网址: [www.mlbio.cn](http://www.mlbio.cn)