

## Anti-IL20RB antibody

|                 |   |
|-----------------|---|
| <b>Cat. No.</b> | ml163696  |
| <b>Package</b>  | 25 µl/100 µl/200 µl                                     |
| <b>Storage</b>  | -20°C, pH7.4 PBS, 0.05% NaN <sub>3</sub> , 40% Glycerol |

### Product overview

|                     |  |
|---------------------|--|
| <b>Description</b>  | Anti-IL20RB rabbit polyclonal antibody |
| <b>Applications</b> | ELISA, IHC                             |
| <b>Immunogen</b>    | Synthetic peptide of human IL20RB      |
| <b>Reactivity</b>   | Human                                  |
| <b>Content</b>      | 1.14 mg/ml                             |
| <b>Host species</b> | Rabbit                                 |
| <b>Ig class</b>     | Immunogen-specific rabbit IgG          |
| <b>Purification</b> | Antigen affinity purification          |

### Target information

|                  |                                      |
|------------------|--------------------------------------|
| <b>Symbol</b>    | IL20RB                               |
| <b>Full name</b> | interleukin 20 receptor subunit beta |
| <b>Synonyms</b>  | DIRS1; FNDC6; IL-20R2                |
| <b>Swissprot</b> | Q6UXL0                               |

### Target Background

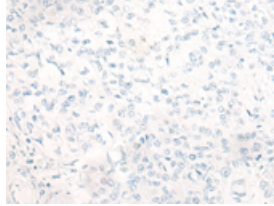
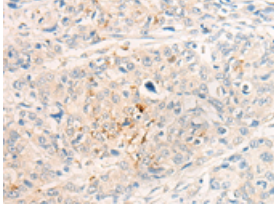
IL20RB and IL20RA (MIM 605620) form a heterodimeric receptor for interleukin-20 (IL20; MIM 605619) (Blumberg et al., 2001 [PubMed 11163236]).

订购热线: 4008-898-798

### Applications

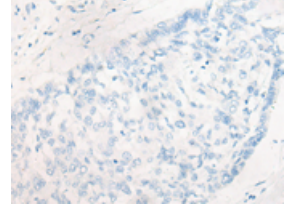
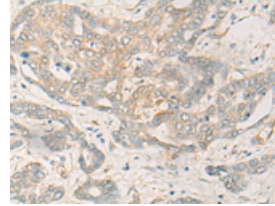
#### Immunohistochemistry

Predicted cell location: Cell membrane  
Positive control: Human prostate cancer  
Recommended dilution: 20-100



The image on the left is immunohistochemistry of paraffin-embedded Human prostate cancer tissue using ml163696(IL20RB Antibody) at dilution 1/30, on the right is treated with synthetic peptide. (Original magnification:  $\times 200$ )

Predicted cell location: Cell membrane  
Positive control: Human liver cancer  
Recommended dilution: 20-100



The image on the left is immunohistochemistry of paraffin-embedded Human liver cancer tissue using ml163696(IL20RB Antibody) at dilution 1/30, on the right is treated with synthetic peptide. (Original magnification:  $\times 200$ )

#### ELISA

Recommended dilution: 5000-10000

联系电话: 4008-898-798, 021-61725725

联系QQ: 2881505695, 2881505696

邮箱: [mlbio\\_cn@yeah.net](mailto:mlbio_cn@yeah.net)

网址: [www.mlbio.cn](http://www.mlbio.cn)