

Anti-DLEC1 antibody

Cat. No.	ml163718
Package	25 µl/100 µl/200 µl
Storage	-20°C, pH7.4 PBS, 0.05% NaN ₃ , 40% Glycerol

Product overview

Description	Anti-DLEC1 rabbit polyclonal antibody
Applications	ELISA, IHC
Immunogen	Synthetic peptide of human DLEC1
Reactivity	Human
Content	0.9 mg/ml
Host species	Rabbit
Ig class	Immunogen-specific rabbit IgG
Purification	Antigen affinity purification

Target information

Symbol	DLEC1
Full name	deleted in lung and esophageal cancer 1
Synonyms	F56; DLC1; DLC-1; CFAP81
Swissprot	Q9Y238

Target Background

The cytogenetic location of this gene is 3p21.3, and it is located in a region that is commonly deleted in a variety of malignancies. Down-regulation of this gene has been observed in several human cancers including lung, esophageal, renal tumors, and head and neck squamous cell carcinoma. In some cases, reduced expression of this gene in tumor cells is a result of aberrant promoter methylation. Several alternatively spliced transcripts have been observed that contain disrupted coding regions and likely encode nonfunctional proteins.

订购热线: 4008-898-798

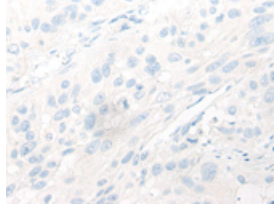
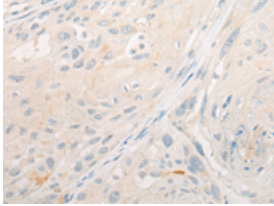
Applications

Immunohistochemistry

Predicted cell location: Cytoplasm

Positive control: Human esophagus cancer

Recommended dilution: 10-50

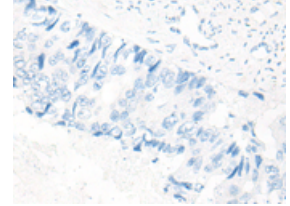
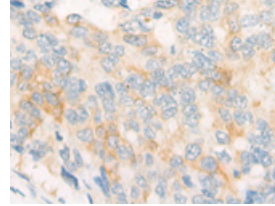


The image on the left is immunohistochemistry of paraffin-embedded Human esophagus cancer tissue using ml163718(DLEC1 Antibody) at dilution 1/25, on the right is treated with synthetic peptide. (Original magnification: $\times 200$)

Predicted cell location: Cytoplasm

Positive control: Human colorectal cancer

Recommended dilution: 10-50



The image on the left is immunohistochemistry of paraffin-embedded Human colorectal cancer tissue using ml163718(DLEC1 Antibody) at dilution 1/25, on the right is treated with synthetic peptide. (Original magnification: $\times 200$)

ELISA

Recommended dilution: 5000-10000

联系电话: 4008-898-798, 021-61725725

联系QQ: 2881505695, 2881505696

邮箱: mlbio_cn@yeah.net

网址: www.mlbio.cn