

## Anti-DND1 antibody

|                 |   |
|-----------------|---|
| <b>Cat. No.</b> | ml163730  |
| <b>Package</b>  | 25 µl/100 µl/200 µl                                     |
| <b>Storage</b>  | -20°C, pH7.4 PBS, 0.05% NaN <sub>3</sub> , 40% Glycerol |

### Product overview

|                     |                                      |
|---------------------|--------------------------------------|
| <b>Description</b>  | Anti-DND1 rabbit polyclonal antibody |
| <b>Applications</b> | ELISA, IHC                           |
| <b>Immunogen</b>    | Synthetic peptide of human DND1      |
| <b>Reactivity</b>   | Human, Mouse                         |
| <b>Content</b>      | 0.48 mg/ml                           |
| <b>Host species</b> | Rabbit                               |
| <b>Ig class</b>     | Immunogen-specific rabbit IgG        |
| <b>Purification</b> | Antigen affinity purification        |

### Target information

|                  |  |
|------------------|--|
| <b>Symbol</b>    | DND1   |
| <b>Full name</b> | DND microRNA-mediated repression inhibitor 1 |
| <b>Synonyms</b>  | RBMS4  |
| <b>Swissprot</b> | Q8IYX4                                       |

### Target Background

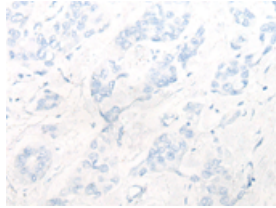
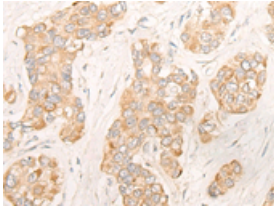
This gene encodes a protein that binds to microRNA-targeting sequences of mRNAs, inhibiting microRNA-mediated repression. Reduced expression of this gene has been implicated in tongue squamous cell carcinoma. Two pseudogenes of this gene are located on the long arm of chromosome 17.

订购热线: 4008-898-798

### Applications

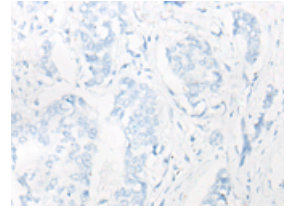
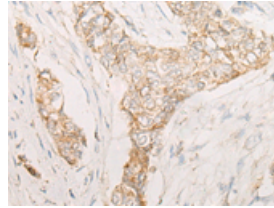
#### Immunohistochemistry

Predicted cell location: Cytoplasm  
Positive control: Human liver cancer  
Recommended dilution: 20-100



The image on the left is immunohistochemistry of paraffin-embedded Human liver cancer tissue using ml163730(DND1 Antibody) at dilution 1/20, on the right is treated with synthetic peptide. (Original magnification:  $\times 200$ )

Predicted cell location: Cytoplasm  
Positive control: Human breast cancer  
Recommended dilution: 20-100



The image on the left is immunohistochemistry of paraffin-embedded Human breast cancer tissue using ml163730(DND1 Antibody) at dilution 1/20, on the right is treated with synthetic peptide. (Original magnification:  $\times 200$ )

#### ELISA

Recommended dilution: 5000-10000

联系电话: 4008-898-798, 021-61725725

联系QQ: 2881505695, 2881505696

邮箱: [mlbio\\_cn@yeah.net](mailto:mlbio_cn@yeah.net)

网址: [www.mlbio.cn](http://www.mlbio.cn)