

Anti-DZIP1 antibody

Cat. No.	ml163751
Package	25 µl/100 µl/200 µl
Storage	-20°C, pH7.4 PBS, 0.05% NaN ₃ , 40% Glycerol

Product overview

Description	Anti-DZIP1 rabbit polyclonal antibody
Applications	ELISA, IHC
Immunogen	Synthetic peptide of human DZIP1
Reactivity	Human
Content	1.44 mg/ml
Host species	Rabbit
Ig class	Immunogen-specific rabbit IgG
Purification	Antigen affinity purification

Target information

Symbol	DZIP1
Full name	DAZ interacting zinc finger protein 1
Synonyms	DZIP; DZIPt1
Swissprot	Q86YF9

Target Background

DZIP1(DAZ interacting protein 1) is also known as DZIP or DZIP2 and is a 867 amino acid protein which is expressed as 3 isoforms, designated DZIPb, DZIPt1 and DZIPt2. DZIP1 is localized to testis, oocytes, ovary and fetal brain, as well as in embryonic stem cells and germ cells. In testis, DZIP1 is localized to the nucleus and also shows some cytoplasmic distribution in spermatogonia. DZIP1 belongs to the C2H2-type zinc-finger protein family, and, characteristic of the C2H2-type zinc-finger protein family, DZIP1 contains one C2H2-type zinc-finger region through which it is thought to interact with DAZ, an interaction that promotes spermiogenesis. DZIP1 expression is not found in those afflicted with Sertoli cell-only syndrome (characterized by the absence of germ cells in the testis), suggesting that the lack of DZIP1 may be involved in the pathogenesis of Sertoli cell-only syndrome-induced male sterility

订购热线: 4008-898-798

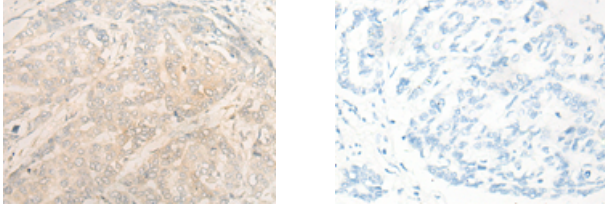
Applications

Immunohistochemistry

Predicted cell location: Cytoplasm

Positive control: Human liver cancer

Recommended dilution: 25-100



The image on the left is immunohistochemistry of paraffin-embedded Human liver cancer tissue using ml163751(DZIP1 Antibody) at dilution 1/35, on the right is treated with synthetic peptide. (Original magnification: $\times 200$)

ELISA

Recommended dilution: 5000-10000

联系电话: 4008-898-798, 021-61725725

联系QQ: 2881505695, 2881505696

邮箱: mlbio_cn@yeah.net

网址: www.mlbio.cn