

## Anti-EBF2 antibody

<b>Cat. No.</b>	ml163752
<b>Package</b>	25 µl/100 µl/200 µl
<b>Storage</b>	-20°C, pH7.4 PBS, 0.05% NaN <sub>3</sub> , 40% Glycerol

### Product overview

<b>Description</b>	Anti-EBF2 rabbit polyclonal antibody
<b>Applications</b>	ELISA, IHC
<b>Immunogen</b>	Synthetic peptide of human EBF2
<b>Reactivity</b>	Human, Mouse
<b>Content</b>	1.14 mg/ml
<b>Host species</b>	Rabbit
<b>Ig class</b>	Immunogen-specific rabbit IgG
<b>Purification</b>	Antigen affinity purification

### Target information

<b>Symbol</b>	EBF2
<b>Full name</b>	early B-cell factor 2
<b>Synonyms</b>	COE2; OE-3; EBF-2; O/E-3
<b>Swissprot</b>	Q9HAK2

### Target Background

The protein encoded by this gene belongs to the COE (Collier/Olf/EBF) family of non-basic, helix-loop-helix transcription factors that have a well conserved DNA binding domain. The COE family proteins play an important role in variety of developmental processes. Studies in mouse suggest that this gene may be involved in the differentiation of osteoblasts.

订购热线: 4008-898-798

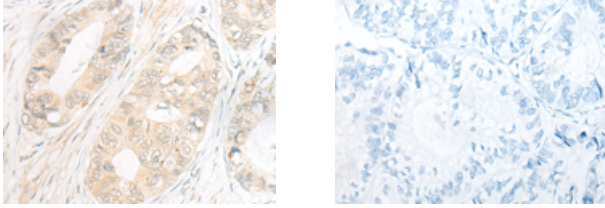
#### Applications

##### Immunohistochemistry

Predicted cell location: Nucleus

Positive control: Human gastric cancer

Recommended dilution: 20-100



The image on the left is immunohistochemistry of paraffin-embedded Human gastric cancer tissue using ml163752(EBF2 Antibody) at dilution 1/30, on the right is treated with synthetic peptide. (Original magnification:  $\times 200$ )

##### ELISA

Recommended dilution: 5000-10000

联系电话: 4008-898-798, 021-61725725

联系QQ: 2881505695, 2881505696

邮箱: [mlbio\\_cn@yeah.net](mailto:mlbio_cn@yeah.net)

网址: [www.mlbio.cn](http://www.mlbio.cn)