

## Anti-ESCO1 antibody

<b>Cat. No.</b>	ml163753
<b>Package</b>	25 µl/100 µl/200 µl
<b>Storage</b>	-20°C, pH7.4 PBS, 0.05% NaN <sub>3</sub> , 40% Glycerol

### Product overview

<b>Description</b>	Anti-ESCO1 rabbit polyclonal antibody
<b>Applications</b>	ELISA, IHC
<b>Immunogen</b>	Synthetic peptide of human ESCO1
<b>Reactivity</b>	Human
<b>Content</b>	0.6 mg/ml
<b>Host species</b>	Rabbit
<b>Ig class</b>	Immunogen-specific rabbit IgG
<b>Purification</b>	Antigen affinity purification

### Target information

<b>Symbol</b>	ESCO1
<b>Full name</b>	establishment of sister chromatid cohesion N-acetyltransferase 1
<b>Synonyms</b>	CTF; ECO1; EFO1; ESO1; A930014I12Rik
<b>Swissprot</b>	Q5FWF5

### Target Background

ESCO1 belongs to a conserved family of acetyltransferases involved in sister chromatid cohesion (Hou and Zou, 2005 [PubMed 15958495]).

订购热线: 4008-898-798

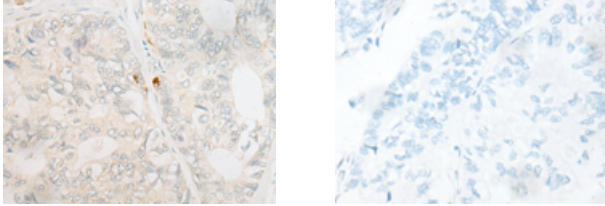
#### Applications

##### Immunohistochemistry

Predicted cell location: Cytoplasm and Nucleus

Positive control: Human gastric cancer

Recommended dilution: 20-100



The image on the left is immunohistochemistry of paraffin-embedded Human gastric cancer tissue using ml163753(ESCO1 Antibody) at dilution 1/20, on the right is treated with synthetic peptide. (Original magnification:  $\times 200$ )

##### ELISA

Recommended dilution: 5000-10000

联系电话: 4008-898-798, 021-61725725

联系QQ: 2881505695, 2881505696

邮箱: [mlbio\\_cn@yeah.net](mailto:mlbio_cn@yeah.net)

网址: [www.mlbio.cn](http://www.mlbio.cn)