

## Anti-GOLGA6A antibody

<b>Cat. No.</b>	ml164010
<b>Package</b>	25 µl/100 µl/200 µl
<b>Storage</b>	-20°C, pH7.4 PBS, 0.05% NaN <sub>3</sub> , 40% Glycerol

### Product overview

<b>Description</b>	Anti-GOLGA6A rabbit polyclonal antibody
<b>Applications</b>	ELISA, IHC
<b>Immunogen</b>	Synthetic peptide of human GOLGA6A
<b>Reactivity</b>	Human
<b>Content</b>	1.38 mg/ml
<b>Host species</b>	Rabbit
<b>Ig class</b>	Immunogen-specific rabbit IgG
<b>Purification</b>	Antigen affinity purification

### Target information

<b>Symbol</b>	GOLGA6A
<b>Full name</b>	golgin A6 family member A
<b>Synonyms</b>	GLP; GOLGA6
<b>Swissprot</b>	Q9NYA3

### Target Background

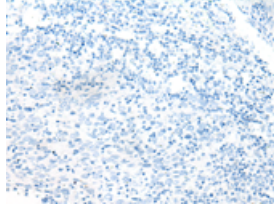
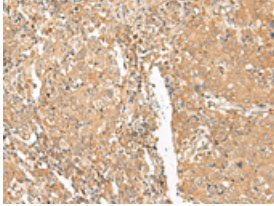
The Golgi apparatus, which participates in glycosylation and transport of proteins and lipids in the secretory pathway, consists of a series of stacked cisternae (flattened membrane sacs). Interactions between the Golgi and microtubules are thought to be important for the reorganization of the Golgi after it fragments during mitosis. The protein encoded by this gene is a member of the golgin family of proteins, whose members localize to the Golgi. This gene is found in a large, low copy repeat sequence or duplicon that is found in multiple copies, that are greater than 90% similar, on chromosome 15. Duplicons are associated with deletions, inversions and other chromosome rearrangements that underlie genomic disease. The protein encoded by this gene is thought to be a functional golgin protein while the majority of the related copies of this gene are thought to be transcribed pseudogenes.

订购热线: 4008-898-798

### Applications

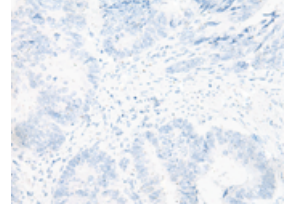
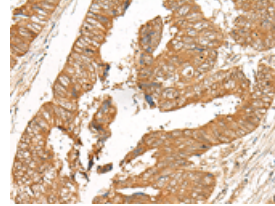
#### Immunohistochemistry

Predicted cell location: Cytoplasm and Nucleus  
Positive control: Human cervical cancer  
Recommended dilution: 50-300



The image on the left is immunohistochemistry of paraffin-embedded Human cervical cancer tissue using ml164010(GOLGA6A Antibody) at dilution 1/50, on the right is treated with synthetic peptide. (Original magnification: ×200)

Predicted cell location: Cytoplasm and Nucleus  
Positive control: Human colorectal cancer  
Recommended dilution: 50-300



The image on the left is immunohistochemistry of paraffin-embedded Human colorectal cancer tissue using ml164010(GOLGA6A Antibody) at dilution 1/50, on the right is treated with synthetic peptide. (Original magnification: ×200)

#### ELISA

Recommended dilution: 5000-10000

联系电话: 4008-898-798, 021-61725725

联系QQ: 2881505695, 2881505696

邮箱: [mlbio\\_cn@yeah.net](mailto:mlbio_cn@yeah.net)

网址: [www.mlbio.cn](http://www.mlbio.cn)