

Anti-GOLIM4 antibody

Cat. No.	ml164012
Package	25 µl/100 µl/200 µl
Storage	-20°C, pH7.4 PBS, 0.05% NaN ₃ , 40% Glycerol

Product overview

Description	Anti-GOLIM4 rabbit polyclonal antibody
Applications	ELISA, IHC
Immunogen	Synthetic peptide of human GOLIM4
Reactivity	Human, Mouse, Rat
Content	0.54 mg/ml
Host species	Rabbit
Ig class	Immunogen-specific rabbit IgG
Purification	Antigen affinity purification

Target information

Symbol	GOLIM4
Full name	golgi integral membrane protein 4
Synonyms	P138; GIMPC; GOLPH4; GPP130
Swissprot	O00461

Target Background

The Golgi complex plays a key role in the sorting and modification of proteins exported from the endoplasmic reticulum. The protein encoded by this gene is a type II Golgi-resident protein. It may process proteins synthesized in the rough endoplasmic reticulum and assist in the transport of protein cargo through the Golgi apparatus.

订购热线: 4008-898-798

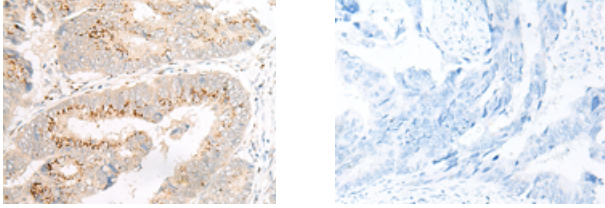
Applications

Immunohistochemistry

Predicted cell location: Cytoplasm

Positive control: Human colorectal cancer

Recommended dilution: 20-100



The image on the left is immunohistochemistry of paraffin-embedded Human colorectal cancer tissue using ml164012(GOLIM4 Antibody) at dilution 1/20, on the right is treated with synthetic peptide. (Original magnification: $\times 200$)

ELISA

Recommended dilution: 5000-10000

联系电话: 4008-898-798, 021-61725725

联系QQ: 2881505695, 2881505696

邮箱: mlbio_cn@yeah.net

网址: www.mlbio.cn